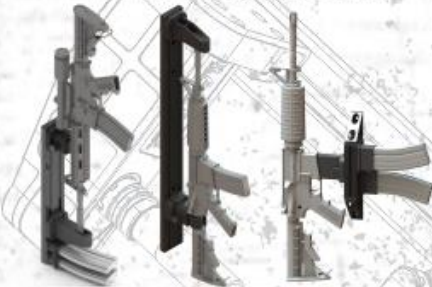


# RAPTOR PRODUCTS APPLICATION GUIDE

## 1 WALL MOUNTED

### SINGLE WEAPON MOUNT



### MULTI-WEAPON MOUNT

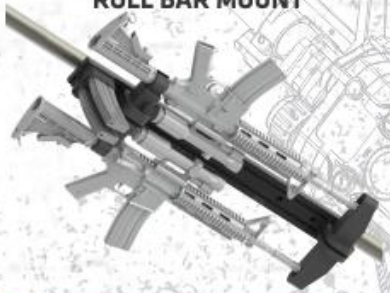


### ARMORY



## 2 VEHICLE MOUNTED

### ROLL BAR MOUNT



### FLOOR MOUNT

1-6 ARs



### PARTITION MOUNT



## 3 TRANSPORT CASES

### 1730 TRANSPORT



UP TO 8 ARs

### 1740 TRANSPORT



UP TO 4 ARs

### 1780 TRANSPORT

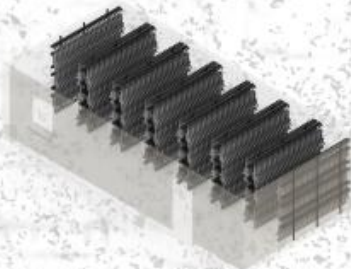


UP TO 18 ARs

CUSTOM CONFIGURATIONS  
AVAILABLE FOR ARs AND GLOCK

## 4 CUSTOM APPLICATIONS

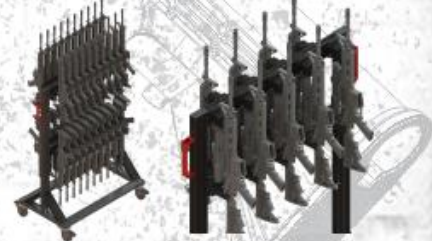
### COMPLETE ARMORY



### RAPTOR SWIVEL MOUNT™



### MOBILE CARTS



 **MADE IN THE USA**

[www.USARAPTOR.com](http://www.USARAPTOR.com)

**RAPTOR**  
SECURE DISPLAY ACCESS PRODUCTS



©2016 Raptor Products, Inc All Copyright, Trademarks, and Registered Trademarks are property of their respective owners.

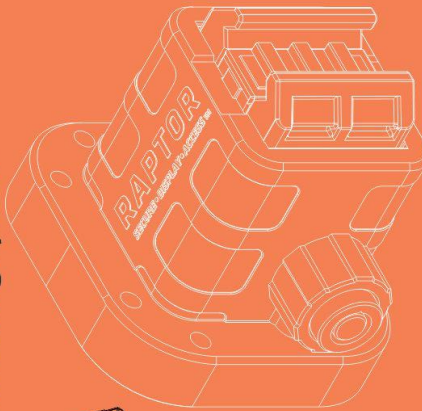


**RAPTOR**  
SECURE DISPLAY ACCESS PRODUCTS

The Raptor Barrel Bracket™ secures your rifle's barrel as part of your custom Raptor™ system configuration.

Raptor Products Weapon Mounting Systems™ provide safe, secure and fast access mounting options for your firearms.

- Mount to your wall (home or office)
- Prevent unauthorized use
- Be Ready in a Moment's Notice
- Mount Inside of your Vehicle
- Secure to Off-Road UTV Roll Bar
- Customized Gun Room display
- Locking & Non-Locking Options



VISIT [WWW.USARAPTOR.COM](http://WWW.USARAPTOR.COM)  
FOR MORE DETAILS ON THESE AND  
OTHER FIREARM MOUNTS



FIND US:  

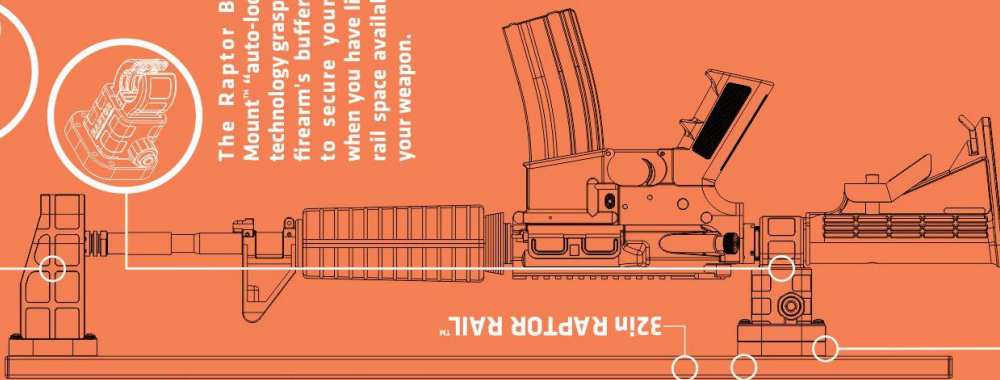


  
 P: 505.985.8077  
 E: [INFO@USARAPTOR.COM](mailto:INFO@USARAPTOR.COM)

The Raptor Picatinny Mount™ "auto-locking" technology secures onto your firearm's picatinny rail, providing security and fast access to your rifle.



The Raptor Buffer Mount™ "auto-locking" technology grasps your firearm's buffer tube to secure your rifle when you have limited rail space available on your weapon.



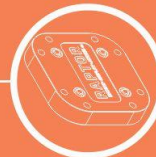
The Raptor Rail™ high-strength, military-grade, light weight aluminum is the foundation of your Raptor™ system configuration.

**RAPTOR SHORT RAIL SYSTEM™**



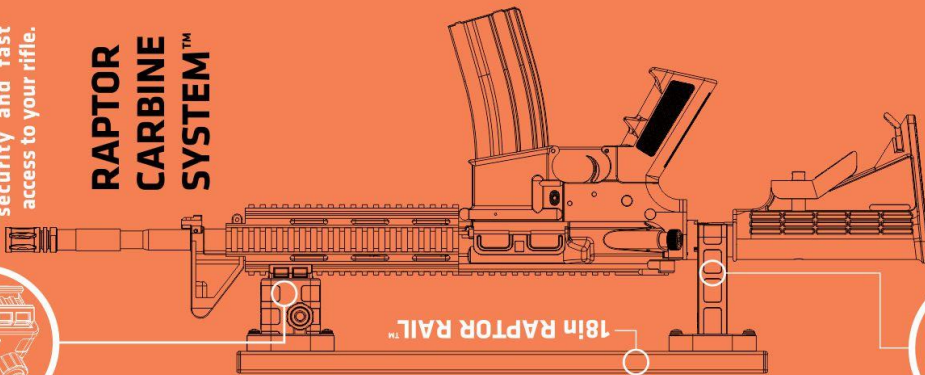
**RAPTOR LONG GUN SYSTEM™**

The Raptor Standoff™ allows you to increase clearance for your tall firearm accessories.



The Raptor Picatinny Mount™ "auto-locking" technology secures onto your firearm's picatinny rail, providing security and fast access to your rifle.

**RAPTOR CARBINE SYSTEM™**



The Raptor Buffer Bracket™ works with your Raptor Picatinny Mount™ for quick and easy access of your firearm while preventing any movement of your firearm.

© 2016 Raptor Products, Inc. All copyrights, trademarks, and registered trademarks are property of their respective owners

# RAPTOR PRODUCTS AR CONFIGURATION GUIDE

## 1 SELECT MOUNTING STYLE

### RAPTOR PICATINNY MOUNT™

SECURES MIL-STD-1913



### RAPTOR BUFFER MOUNT™

SECURES TO BUFFER TUBE

MILL-SPEC  
&  
COMMERCIAL



### RAPTOR MAGAZINE MOUNT™

SECURES AR15 MAG WELL



## 2 SELECT BRACKET

### RAPTOR BARREL BRACKET™

HOLDS MUZZLE BREAK

DIA 0.7, 0.9, 1.0



### RAPTOR BUFFER BRACKET™

HOLDS BUFFER TUBE

MILL-SPEC  
&  
COMMERCIAL



### RAPTOR STANDOFF™

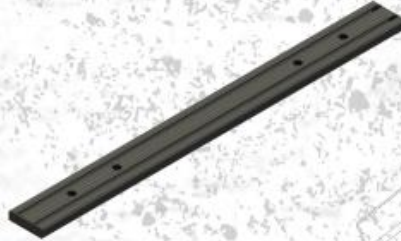
ADDS 0.5IN OF CLEARANCE



## 3 SELECT RAIL

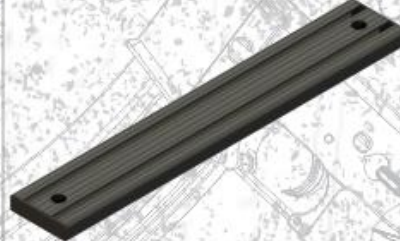
### RAPTOR RAIL™ 32IN

32in RAIL WITH 4 MOUNT HOLES



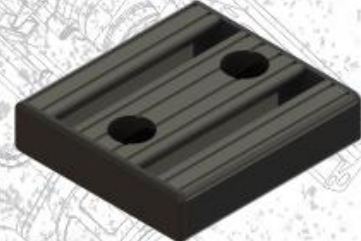
### RAPTOR RAIL™ 18IN

18IN RAIL WITH 2 MOUNT HOLES



### RAPTOR RAIL™ 3IN

3IN RAIL WITH 2 MOUNT HOLES



## 4 SELECT ACCESSORIES

### RAPTOR MAGAZINE HOLDER™

HOLDS AR15 MAGAZINES



### ROLL BAR MOUNTS

MOUNTS TO ROLL BAR



DIA .750, .875", 1.0", 1.125", 1.25", 1.375",  
1.5", 1.625", 1.7", 1.75", 1.85", 1.875", 2.0",  
2.25", 2.375", 2.5", 2.625", 2.75", 2.875",  
3.0", 3.25"

### RAPTOR GEAR PROTECTOR PLATE™

PROTECTS WEAPON PROFILE



[www.USARAPTOR.com](http://www.USARAPTOR.com)



©2018 Raptor Products, Inc All Copyright, Trademarks, and Registered Trademarks are property of their respective owners.

# RAPTOR MULTI-WEAPON TRANSPORT CASE™

# RAPTOR PRODUCTS



## PELICAN® 1780

50/50 LID/BASE  
44.90" L  
25.32" W  
16.50" H



## ADJUSTABLE RAPTOR RAIL™

INTEGRATED RAIL SYSTEM  
DURABLE FOUNDATION  
RAPTOR RAILS™

## RAPTOR HOLSTER™

SMALL FRAME GLOCKS®  
OPTIONAL ACCESSORY  
LOCKING CAPABLE  
HIGH DENSITY 1.9 OZ

## RAPTOR MAGAZINE HOLDER™

HIGH DENSITY 1.5 OZ  
SPARE MAGAZINES  
AR15 | M4 | M16

## RAPTOR MOUNTING SYSTEM™

SECURELY HOLDS FIREARMS  
WITH RAPTOR PICATINNY MOUNT™  
OR RAPTOR BUFFER MOUNT™  
FOR RAPID DEPLOYMENT

## HIGH CAPACITY

UP TO 11 LONG GUNS\*\*  
UP TO 11 GLOCKS\*\*  
UP TO 28 SPARE MAGAZINES\*\*  
\*\*DEPENDENT ON CONFIGURATION.  
CUSTOM CONFIGURATIONS AVAILABLE!

## MSRP \$2,500

TRANSPORT CASE OPTIONS:

- (11) RAPTOR PICATINNY MOUNTS - RPN8010
- (11) RAPTOR BUFFER MOUNTS - RPN8011
- (6) RAPTOR BUFFER MOUNTS & (5) PICATINNY MOUNTS - RPN8012

\*AS PICTURED MSRP \$3,808



VISIT

**WWW.USARAPTOR.COM** FOR MORE PRODUCTS

P: 505.985.8077 FIND US:  
E: INFO@USARAPTOR.COM



IS4537-2303 ISP Case

Capacity: Max 30 M4

Dimensions: EXTERIOR (L X W X D) 48.00" x 40.00" x 32.00"

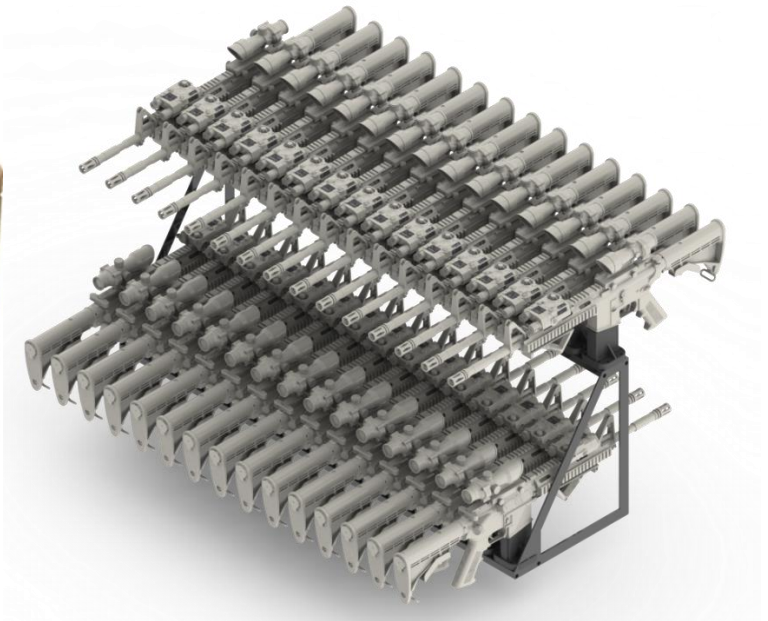
Weight Empty: 130 lbs

Weight Full capacity: 370 lbs

Skids for pallet jack/forklift. Can have casters added if requested.



Colors:



IS4517-1103 ISP Case

Capacity: Max 6 M870

Dimensions: EXTERIOR (L X W X D) 48.00" x 20.00" x 16.00"

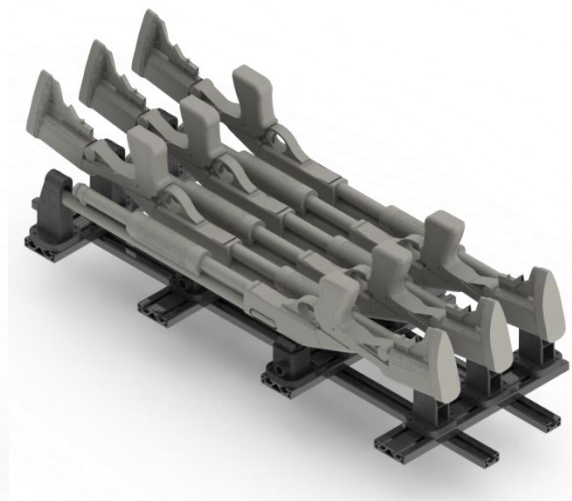
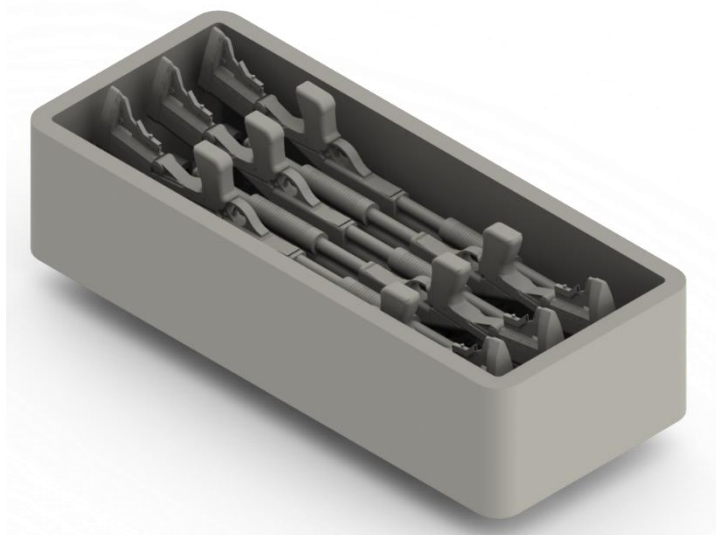
Weight Empty: 65 lbs

Weight Full capacity: 110 lbs

Integrated wheel on one end. Can have casters added if requested.



Colors:



IS4517-1103 ISP Case

Capacity: Max 56 M9 / Glock 17

Dimensions: EXTERIOR (L X W X D) 48.00" x 20.00" x 16.00"

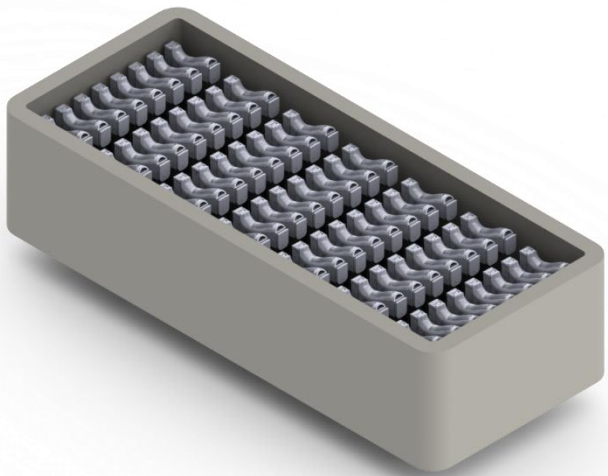
Weight Empty: 150 lbs

Weight Full capacity: 260 lbs

Integrated wheel on one end. Can have casters added if requested.



Colors:

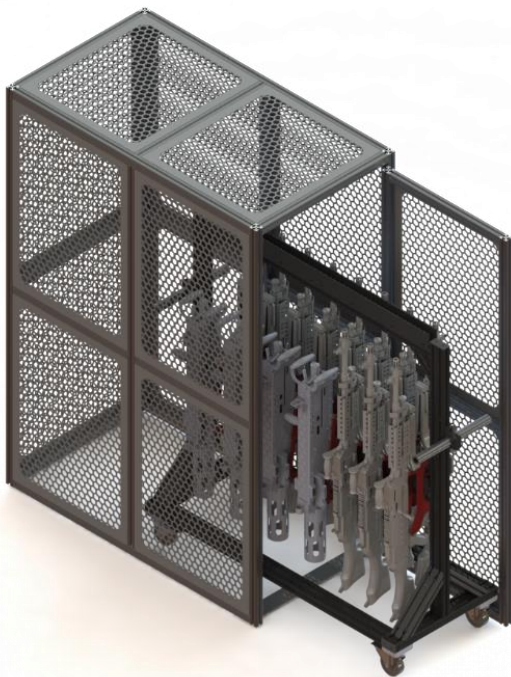


Open Cart

Customizable for required capacity and weapon mix

Can be integrated into lockable cage as armory storage

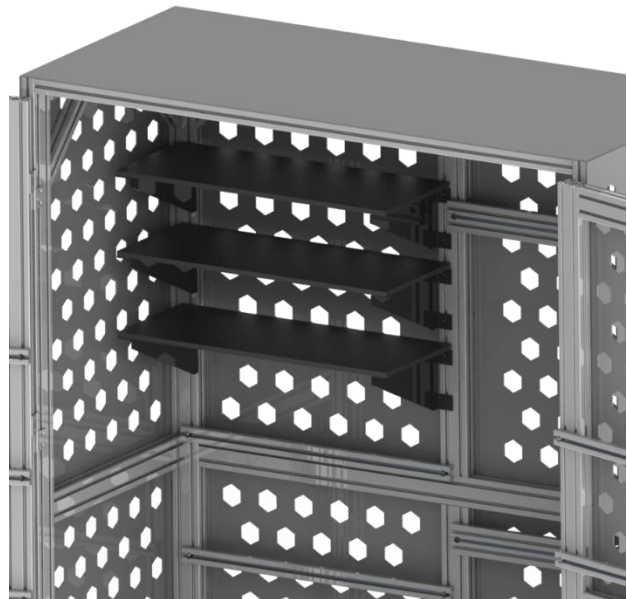
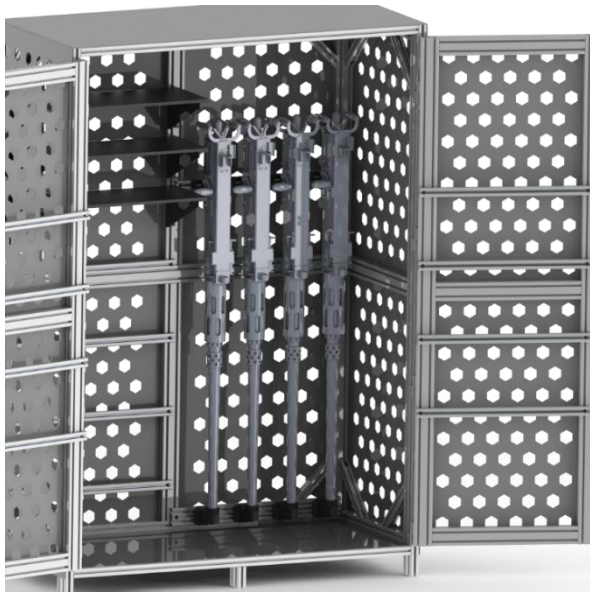
Weapon Platforms: M4, M9, M870, M240, M249, M2 .50, M320, M203, M24, M107, Magazines





Secure Storage cabinets for use with or without carts

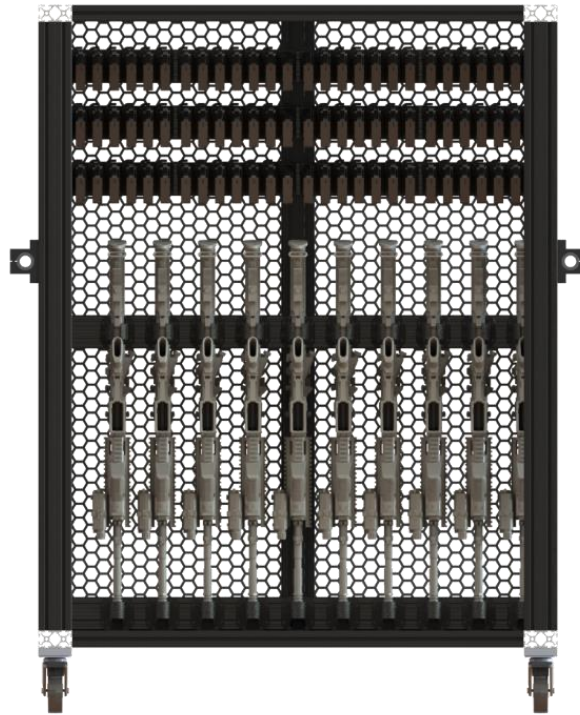
Customizable for size to maximize available space.



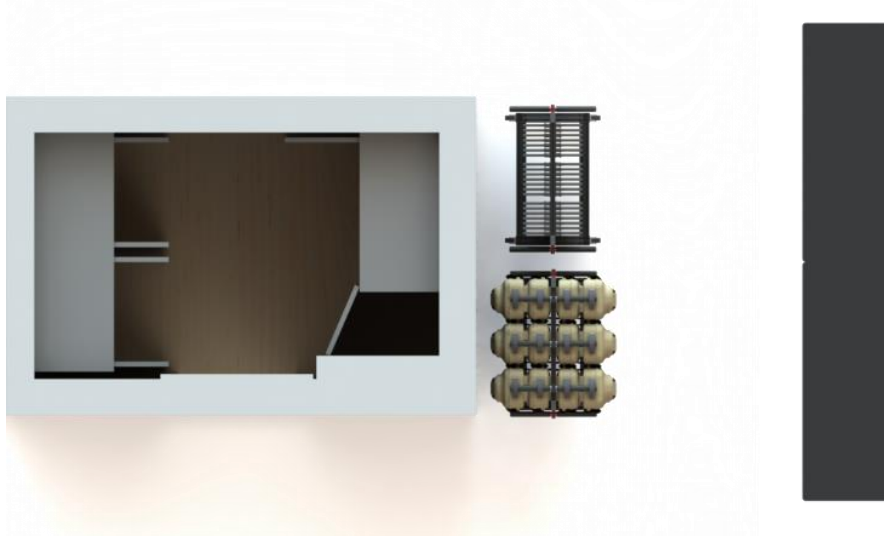
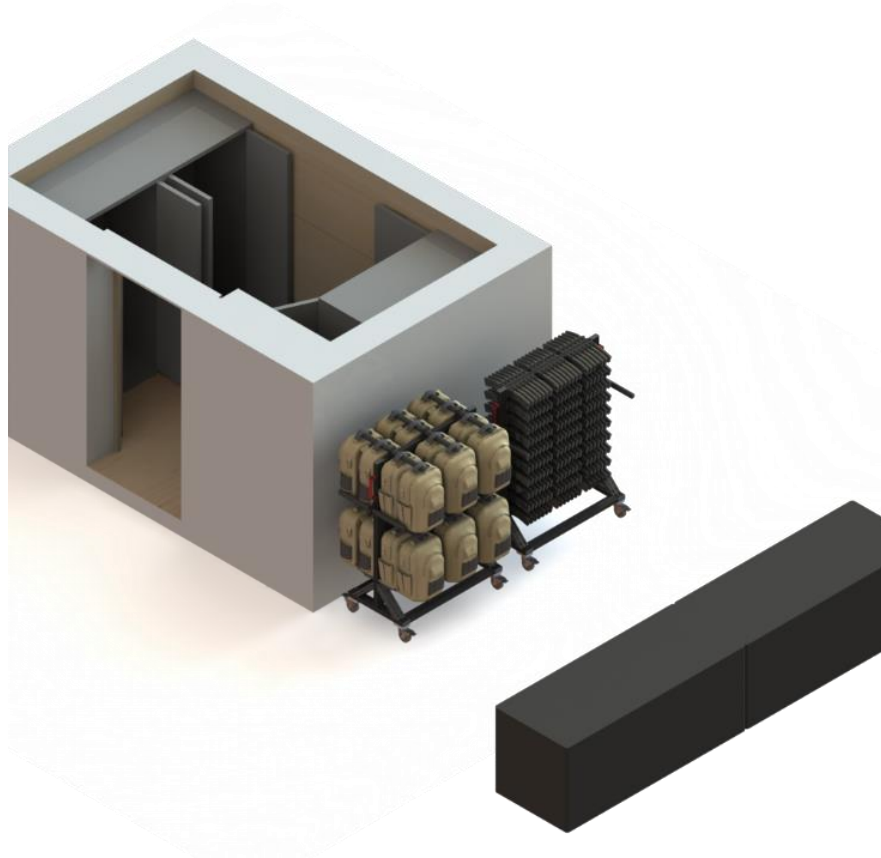
**Enclosed lockable carts can be secured to wall mount.**

Work as stationary armory cabinet and become mobile when needed.

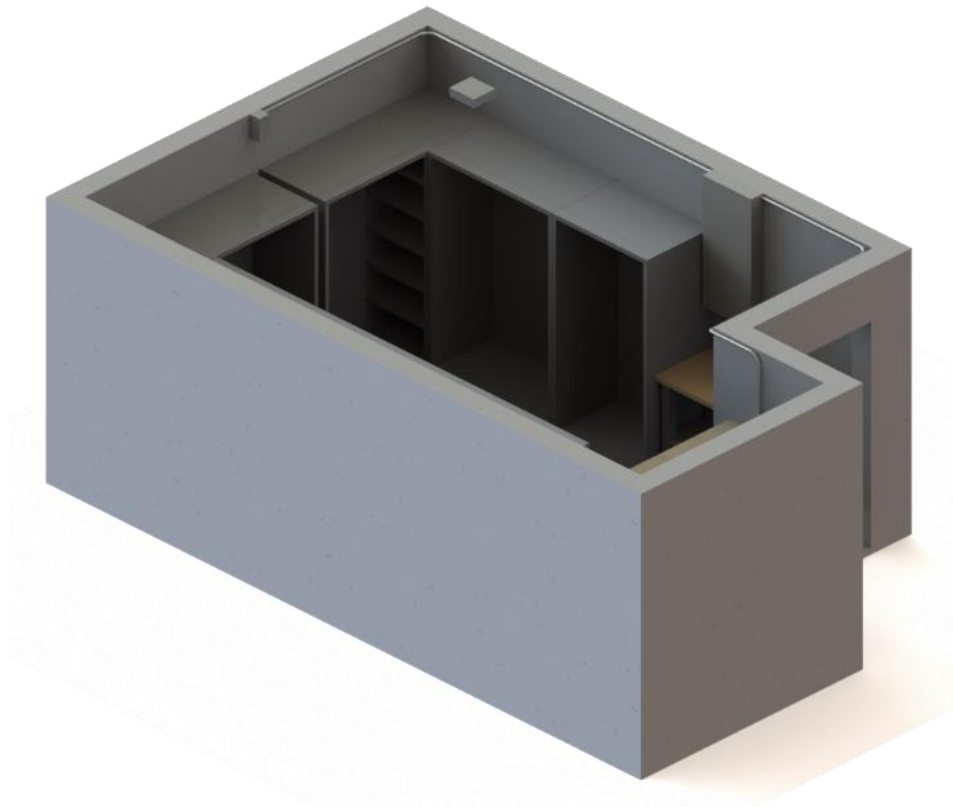
Weapon Platforms: M4, M9, M870, M240, M249, M2 .50, M320, M203, M24, M107, Magazines



Custom full armorry build out including support gear carts.



Custom full armory build out including support gear carts.



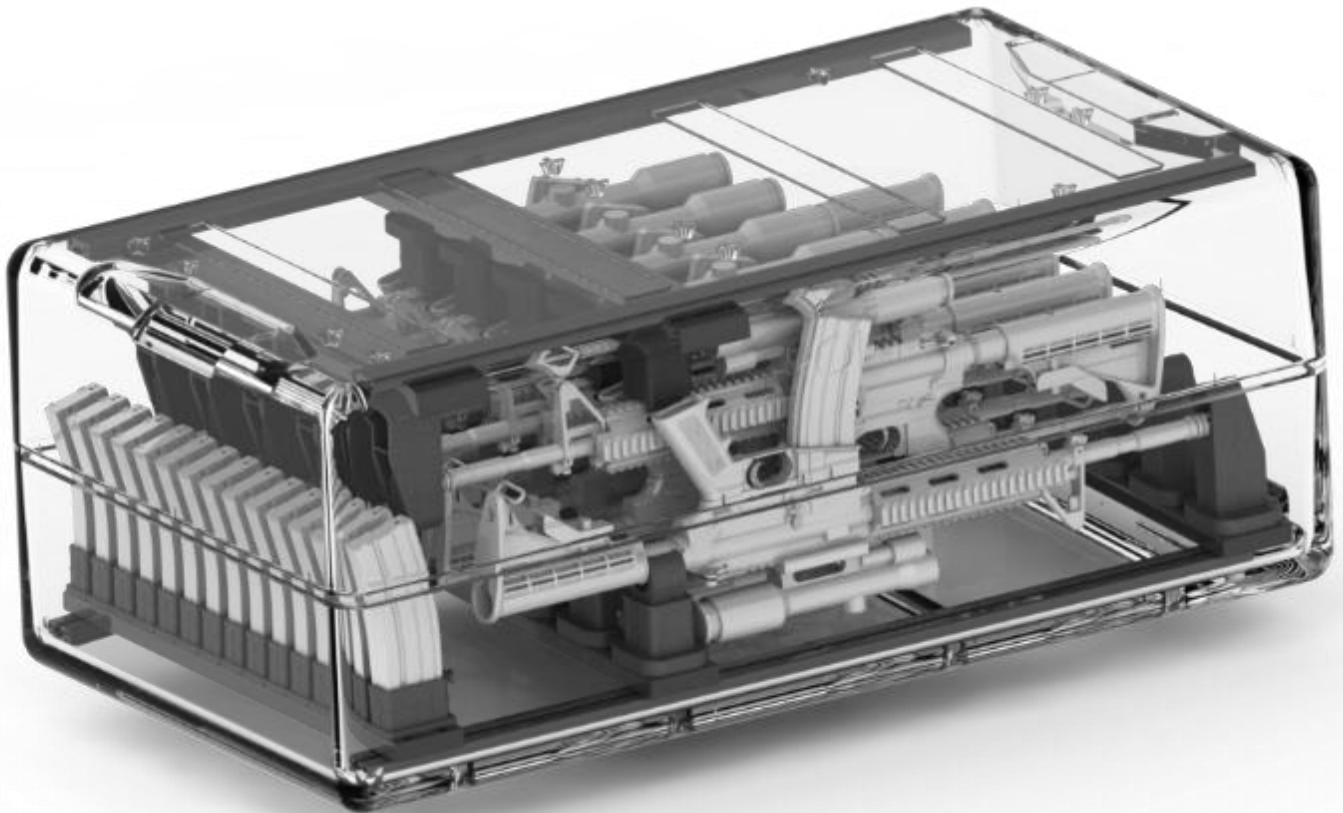
Weapon stands and wall mounts for range and training class rooms.



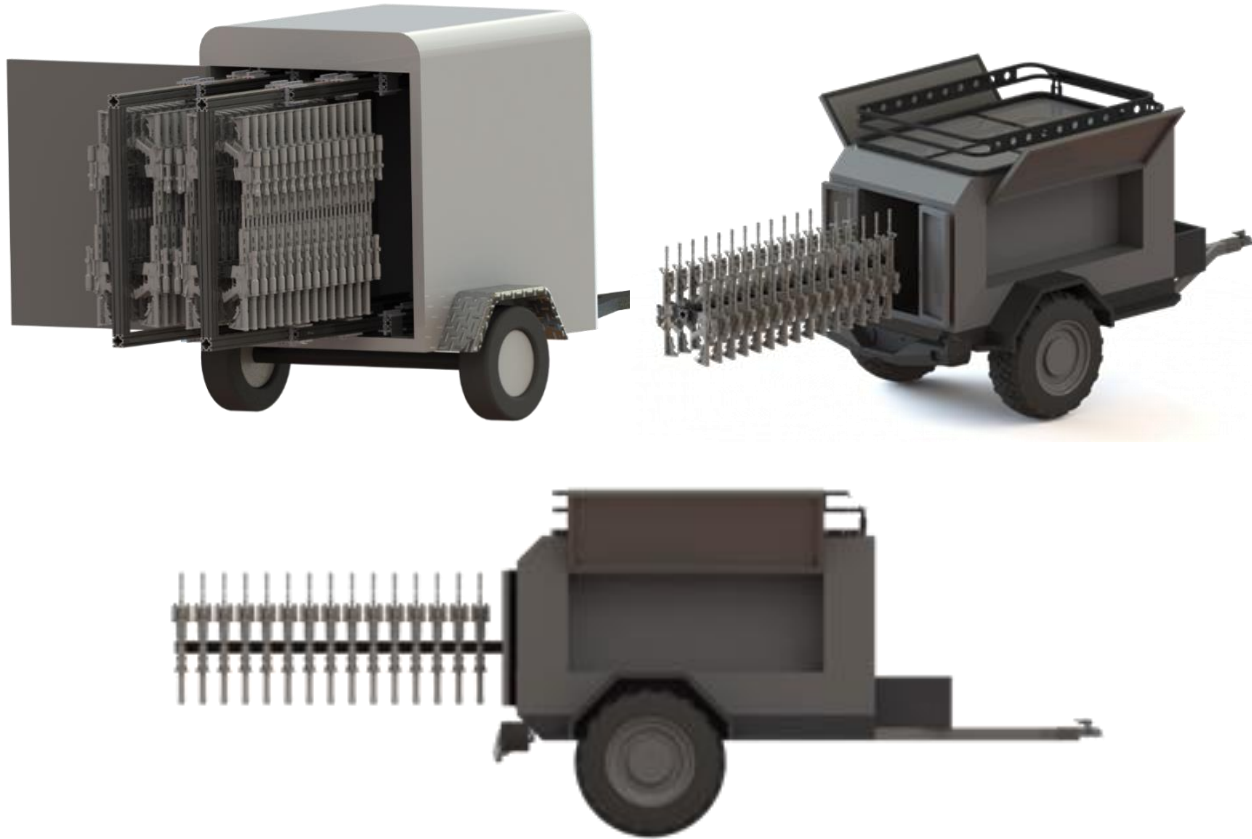
Customized cases to fit mission needs.



Customized cases to fit mission needs.



Mobile armory trailers and cages



Trailers are sized and custom built to meet customer's requirements and can include armorers workbench, lighting, 120v/12v power, cleaning station, support gear storage, descrete exterior appearacne or customized exterior graphics.

