

**RAPTOR**  
SECURE DISPLAY ACCESS PRODUCTS



Raptor Products - Weapon Mounting System  
Law Enforcement and Military Information

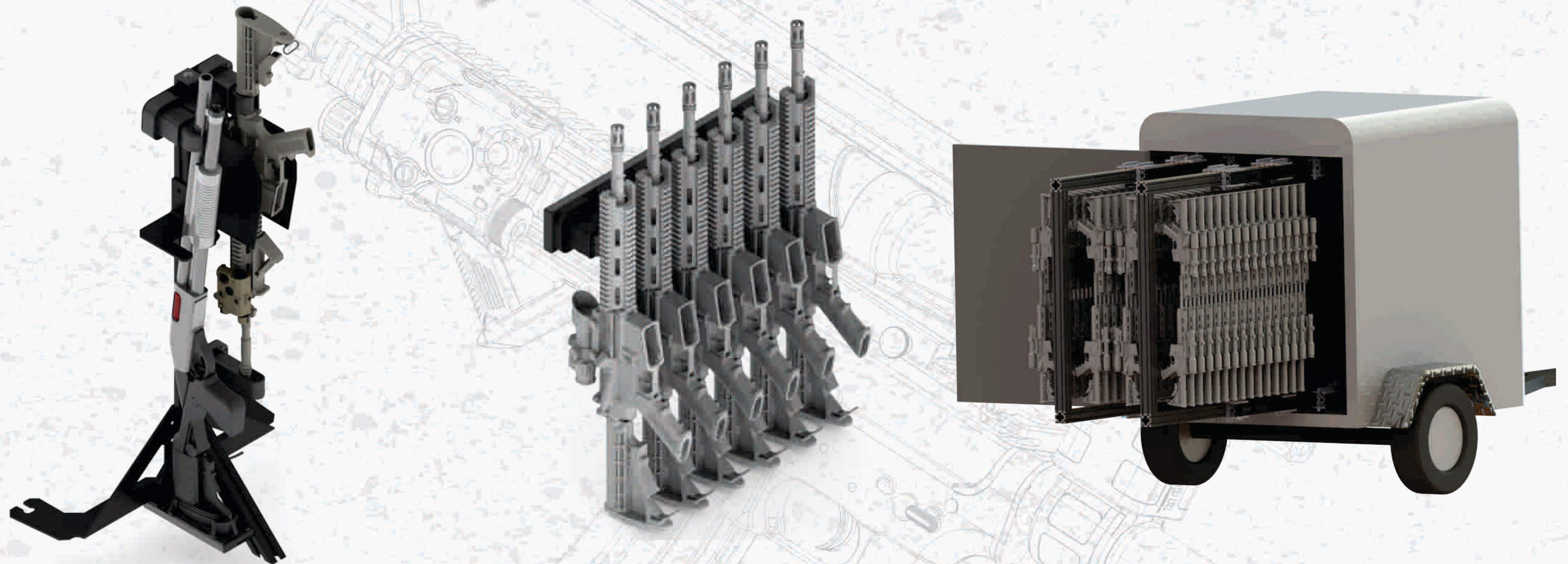
[WWW.USARAPTOR.COM](http://WWW.USARAPTOR.COM)



Raptor Products Weapon Mounting Systems are innovative fast access firearm mount and display systems for those who want to keep their firearms secure while maintaining easy access. All Raptor Products Weapon Mounting Systems are made in the USA to ensure quality product you can stand behind.

### How do the Raptor Mounts work?

Our patented “auto-locking” clamp technology fastens to your firearms securely with a simple push to “lock-in and lock-out” action that secures your weapon for quick access when you need it. Our durable and reliable design is modular and can be customized to fit your firearm platform.



### Will the Raptor Mounting System Work with my Weapon?

The Raptor Mounting and Display system™ is designed as a modular system enabling customized configuration to fit your weapon platform. The modularity of the system enables you to maintain the weapon setup you have and build the mounting system around your accessories such as lights, optics and grips. Almost any weapon platform with a 1913Picatinny rail or buffer tube can be secured with the Raptor Mounting and Display system™.



# RAPTOR PRODUCTS AR CONFIGURATION GUIDE

## 1 SELECT MOUNTING STYLE

### RAPTOR PICATINNY MOUNT™

SECURES MIL-STD-1913



### RAPTOR BUFFER MOUNT™

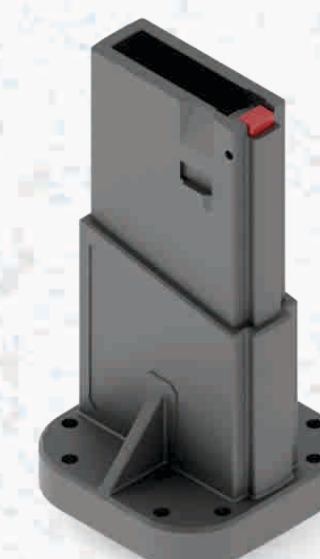
SECURES TO BUFFER TUBE

MILL-SPEC  
&  
COMMERCIAL



### RAPTOR MAGAZINE MOUNT™

SECURES AR15 MAG WELL



## 2 SELECT BRACKET

### RAPTOR BARREL BRACKET™

HOLDS MUZZLE BREAK

DIA 0.7, 0.9, 1.0



### RAPTOR BUFFER BRACKET™

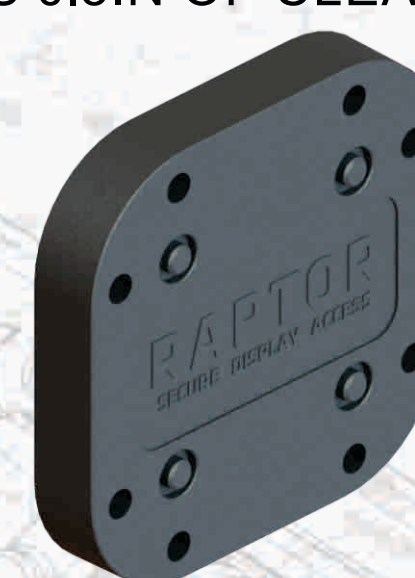
HOLDS BUFFER TUBE

MILL-SPEC  
&  
COMMERCIAL



### RAPTOR STANDOFF™

ADDS 0.5IN OF CLEARANCE



## 3 SELECT RAIL

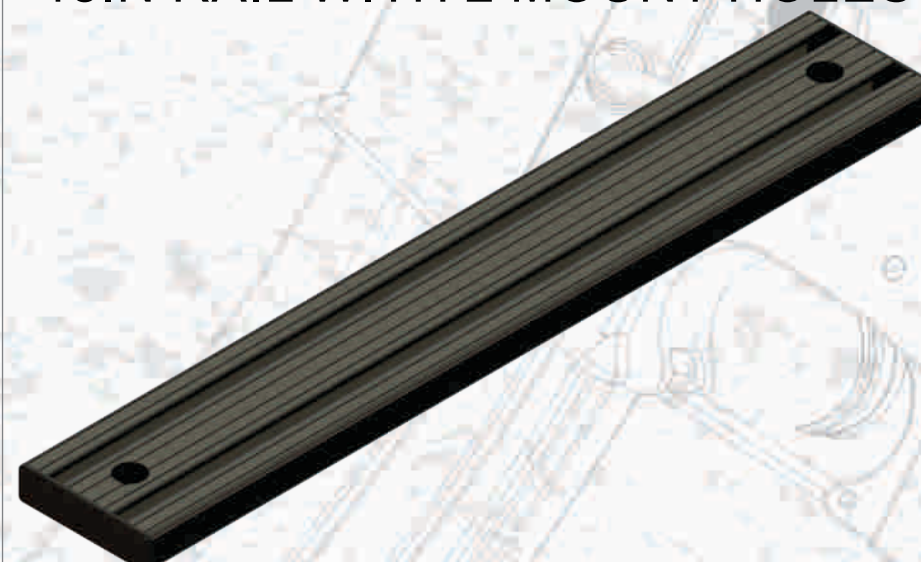
### RAPTOR RAIL™ 32IN

32in RAIL WITH 4 MOUNT HOLES



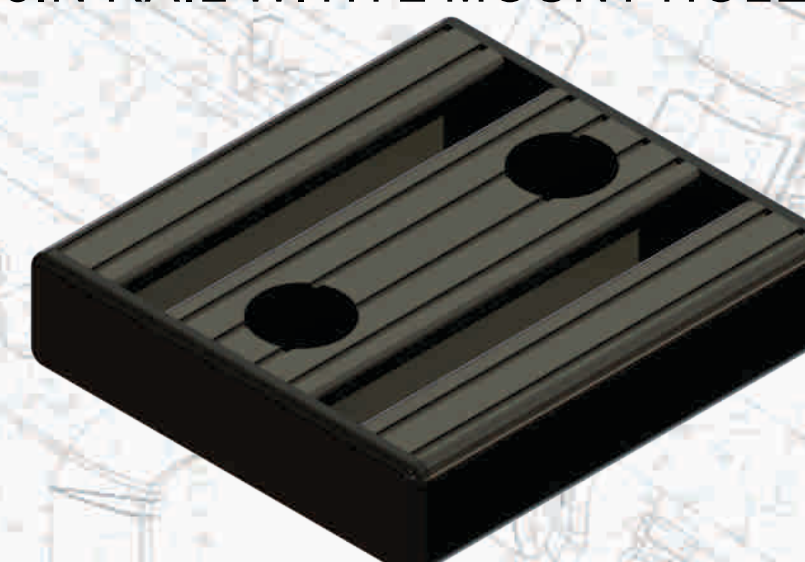
### RAPTOR RAIL™ 18IN

18in RAIL WITH 2 MOUNT HOLES



### RAPTOR RAIL™ 3IN

3IN RAIL WITH 2 MOUNT HOLES



## 4 SELECT ACCESSORIES

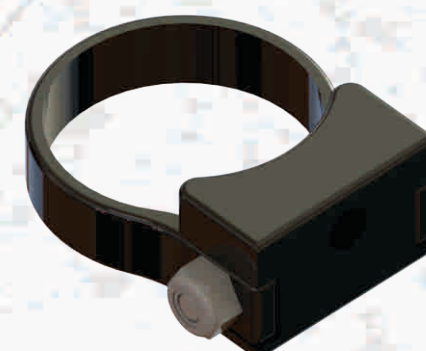
### RAPTOR MAGAZINE HOLDER™

HOLDS AR15 MAGAZINES



### ROLL BAR MOUNTS

MOUNTS TO ROLL BAR



DIA .750, .875", 1.0", 1.125", 1.25", 1.375",  
1.5", 1.625", 1.7", 1.75", 1.85", 1.875", 2.0",  
2.25", 2.375", 2.5", 2.625", 2.75", 2.875",  
3.0", 3.25"

### RAPTOR GEAR PROTECTOR PLATE™

PROTECTS WEAPON PROFILE

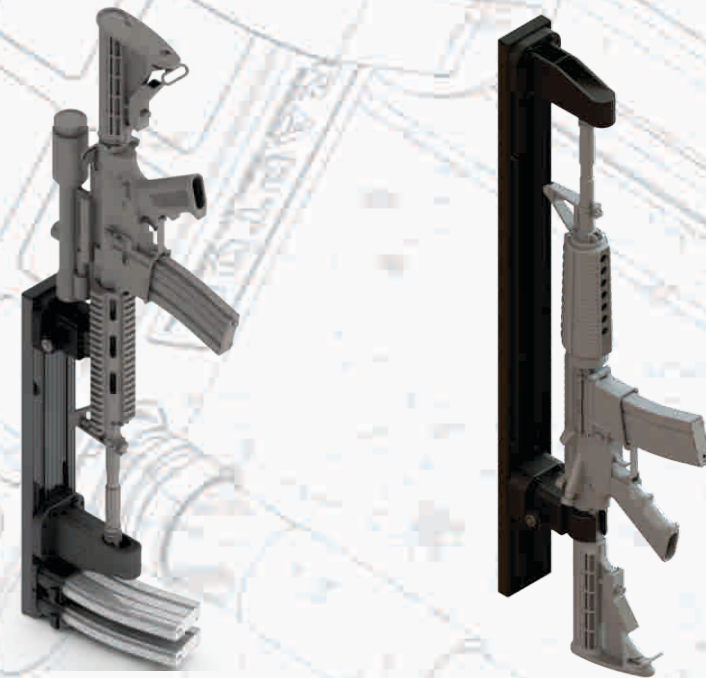




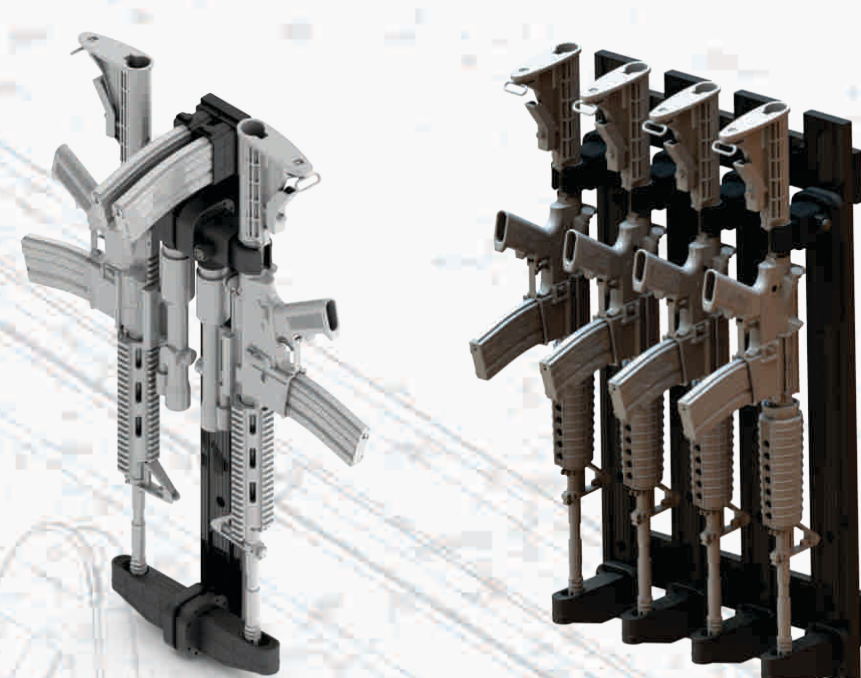
# RAPTOR PRODUCTS APPLICATION GUIDE

## 1 WALL MOUNTED

### SINGLE WEAPON MOUNT



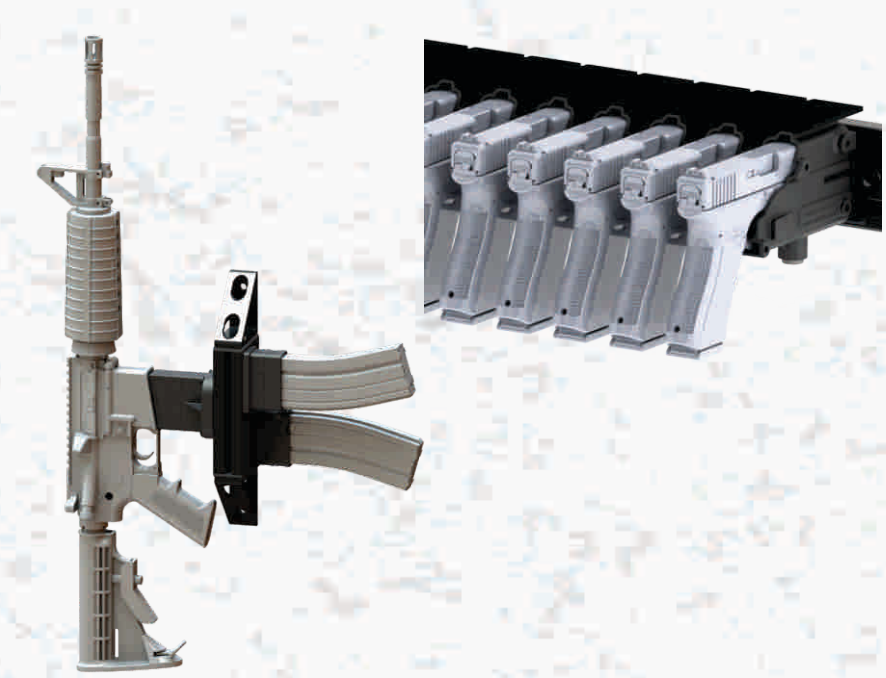
### MULTI-WEAPON MOUNT



### ARMORY



### LONG GUNS & HAND GUNS



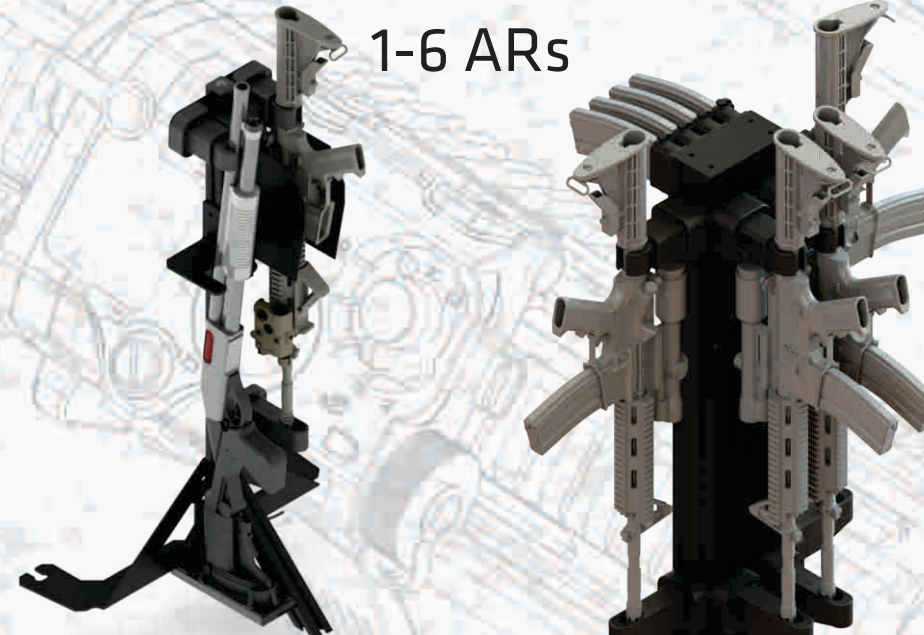
## 2 VEHICLE MOUNTED

### ROLL BAR MOUNT

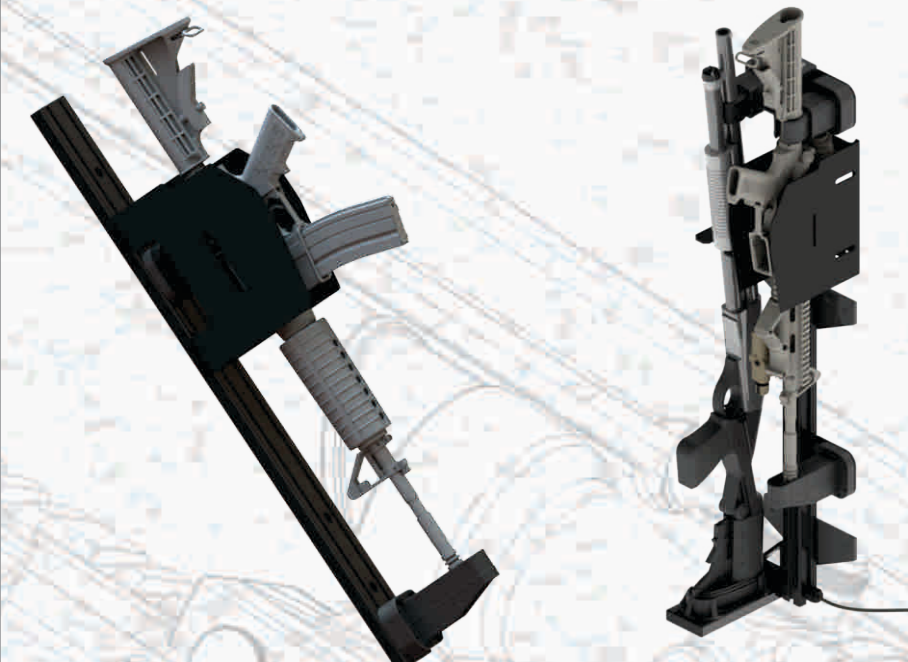


### FLOOR MOUNT

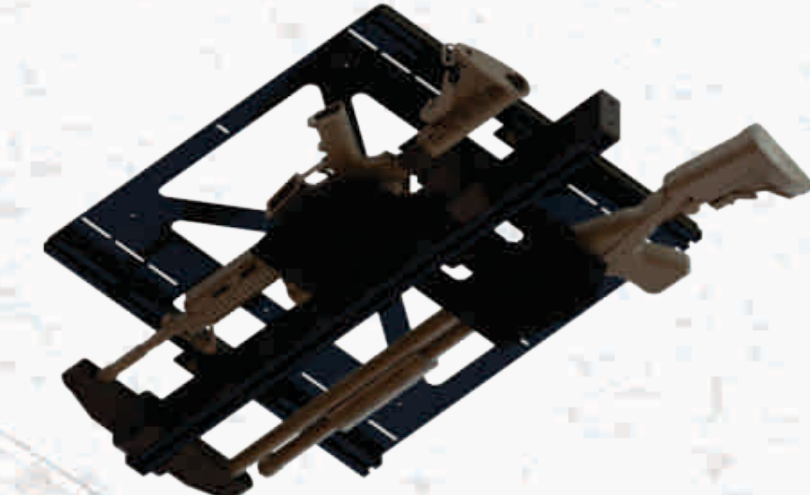
1-6 ARs



### PARTITION MOUNT



### OVERHEAD MOUNT



## 3 TRANSPORT

### 1730 TRANSPORT



UP TO 8 ARs

### 1740 TRANSPORT



UP TO 4 ARs

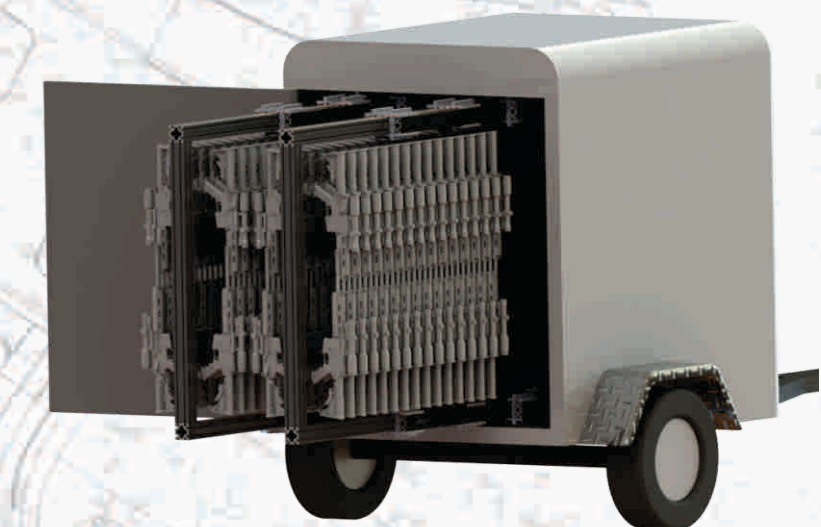
CUSTOM CONFIGURATIONS  
AVAILABLE FOR ARs AND GLOCK

### 1780 TRANSPORT



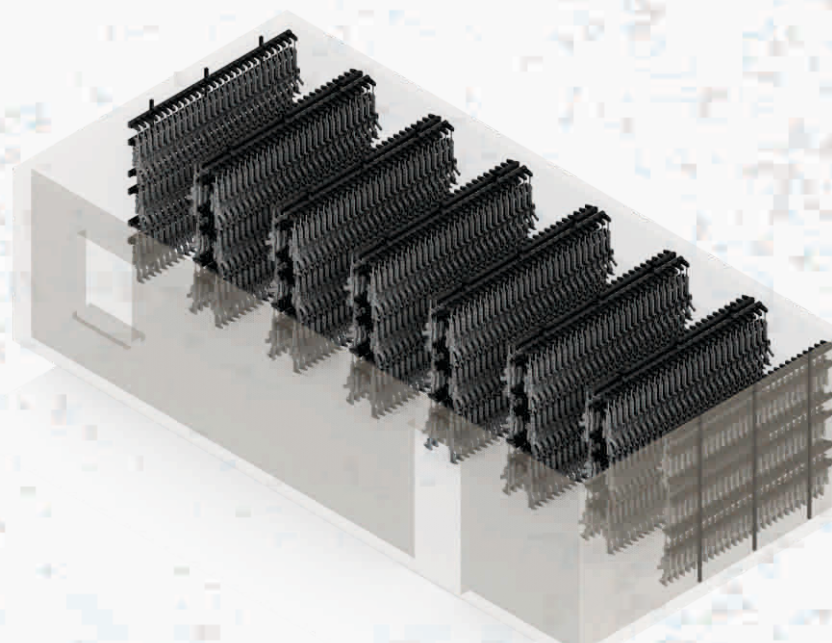
UP TO 18 ARs

### TRAILER AND MOBILE COMMAND



## 4 CUSTOM APPLICATIONS

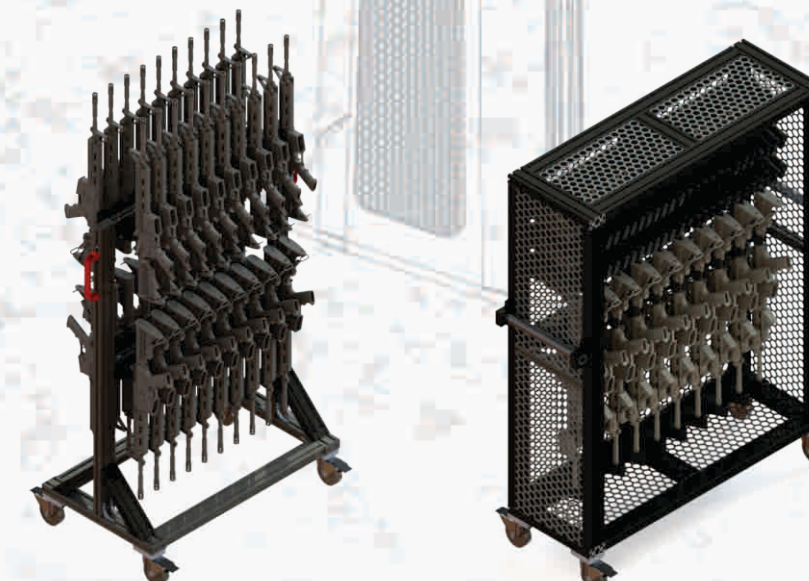
### COMPLETE ARMORY



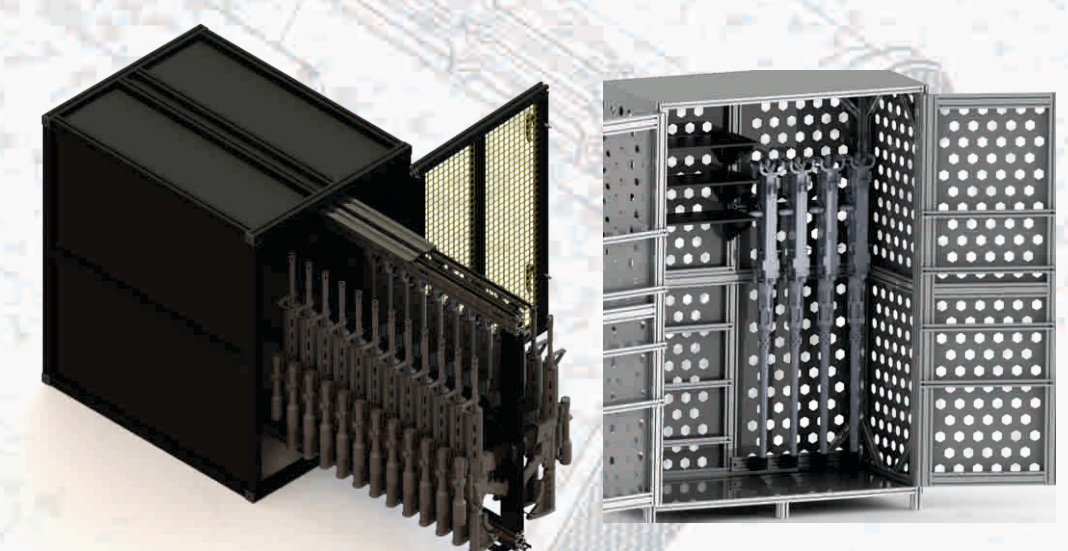
### RAPTOR SWIVEL MOUNT™



### MOBILE CARTS

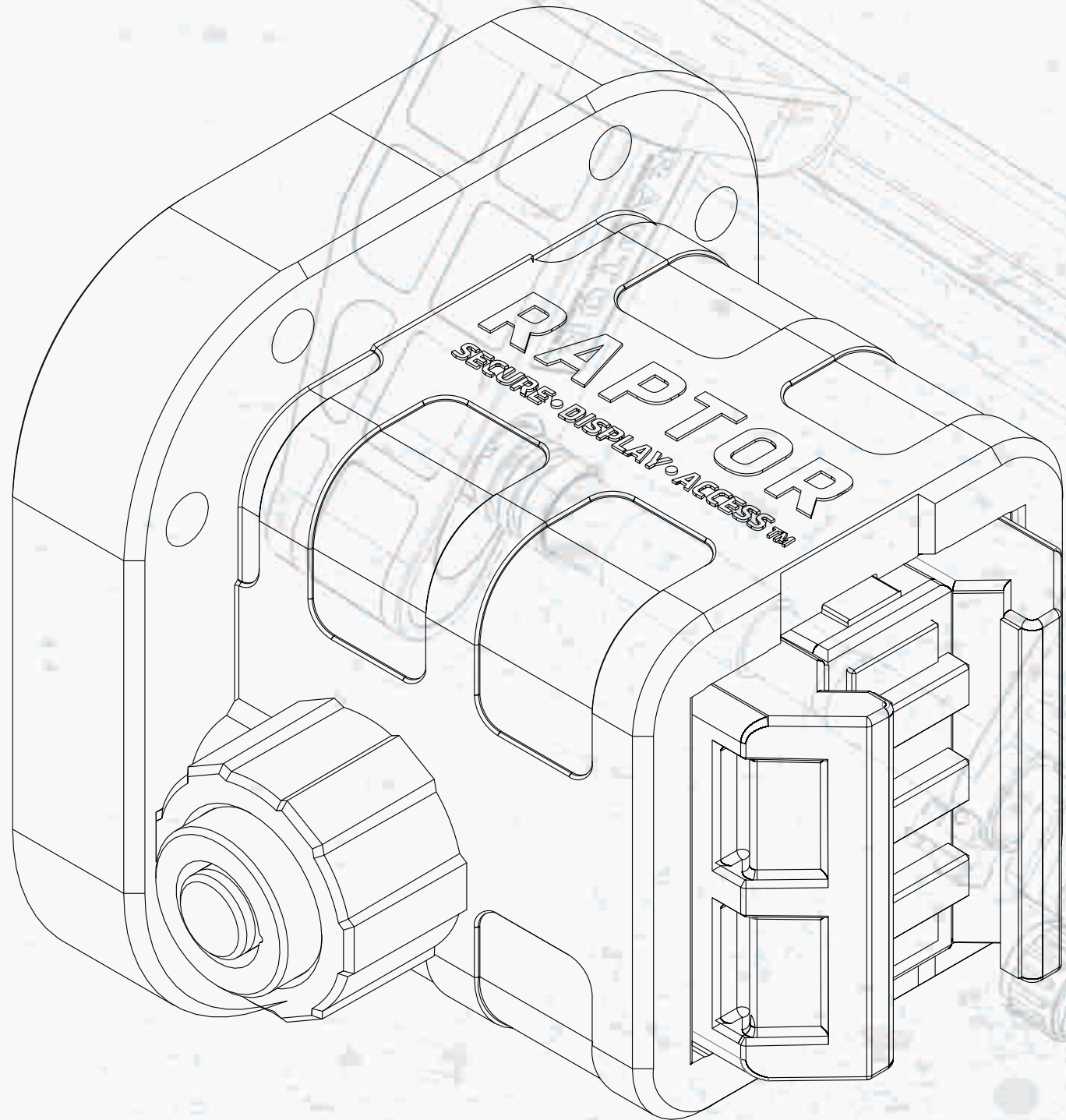


### SECURE ENCLOSURES





RAPTOR PICATINNY MOUNT™



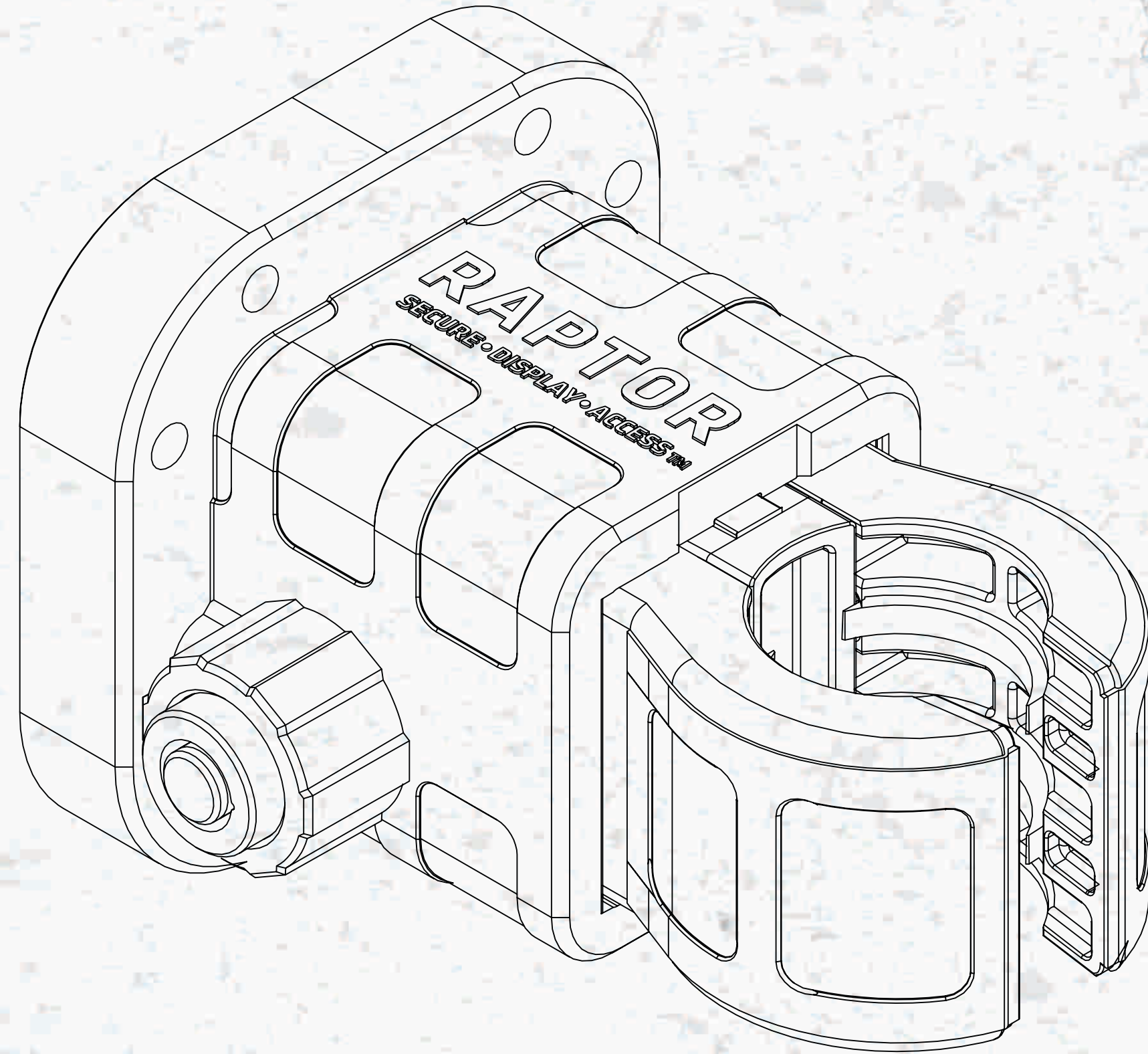
- “Auto-locking” Technology. Simple push to “lock-in and lock-out”
- Provides Innovative Quick Access
- For use as part of your custom RAPTOR™ System Configuration
- Designed for Mil-Spec Picatinny rails
- Made with Heavy Duty High-Tech Polymer and Stainless Steel
- Rubberized Inserts for a Tight No-Slip Grip
- Firearm won't rattle
- High-Security Tamper-Proof Keyed Lock
- Two (2) keyed alike barrel keys included (with locking model)

Raptor Picatinny Mount Specifications

Product Weight	0.5 lbs.
Shipping Weight	0.85 lbs.
Product Material	HighTech Polymer & Stainless Steel
Product Dimensions	3in x 3in x3in
Holding Force	Engineered for 1,000 lbs. Direct Pull*
Operating Temperature	10°F110°F
Mounting Hardware	x4 1032 Security Screws x4 1032Phillips Screws
Product Lock	HighSecurity TamperProof Keyed Lock
Designed Mount	MilSpec Picatinny Rail
Product Options	Keyed Locking, Electronic Locking & NoLocking

Mg{gf 'Nqem	TRP1005
Grgevtqple'Nqem	TRP 3005
Pqp-Locking	TRP1010

RAPTOR BUFFER MOUNT™



- “Auto-locking” Technology. Simple push to “lock-in and lock-out”
- Provides Innovative Quick Access
- For use as part of your custom RAPTOR™ System Configuration
- Works with Mil-Spec receiver extension “buffer tube”
- Works with commercial receiver extension “buffer tube”
- Use with one (1) Raptor Standoff™ to center barrel in Raptor Barrel Bracket™
- Made with Heavy Duty High-Tech Polymer and Stainless Steel
- Rubberized inserts for a tight non-slip grip
- Optional High-Security Tamper-Proof keyed lock
- Two (2) keyed alike barrel keys Included (with locking model)

Tr rvqBuffleMountSpecifications

Product Weight	0.5 lbs.
Shipping Weight	0.85 lbs.
ProductMaterial	HighTech Polymer
Product Dimensions	3in x 3in x 4.25in
Holding Force	Engineered for 500 lbs. Direct Pull*
Operating Temperature	10°F110°F
Mounting Hardware	x4 1032 Security Screws x4 1032 Phillips Screws
Product Lock	HighSecurityTampeProof Keyed Lock
Designed Mount	MilSpec Receiver Extension Commercial Receiver Extension
Product Options	Keyed Locking, Electronic Locking & NoLocking

Mg{gf 'Nqem	TRP 3237
Grgevtqple'Nqem	TRP 3010
Pqp-Locking	TRP 3242



# RAPTOR PRODUCTS ACCESSORIES

## 1 STEEL PLATES

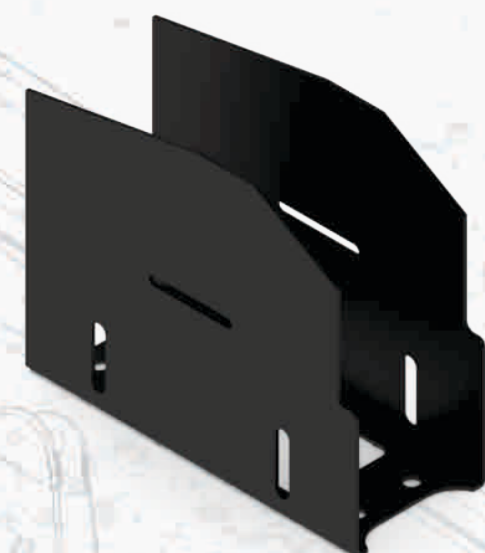
### RAPTOR GEAR PLATES

RPN1110 RIGHT



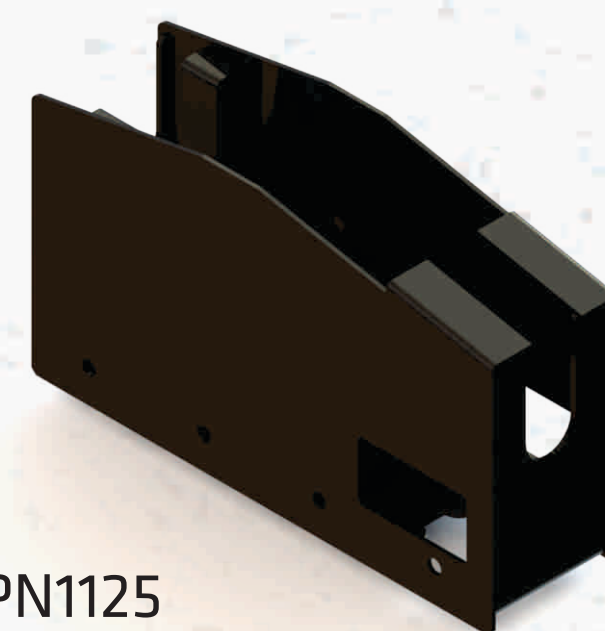
RPN1100 LEFT

### RAPTOR FULL SHIELD



RPN1120

### RAPTOR FULL ENCLOSURE



RPN1125

### RAPTOR ARMORED PLATE



RPN1115

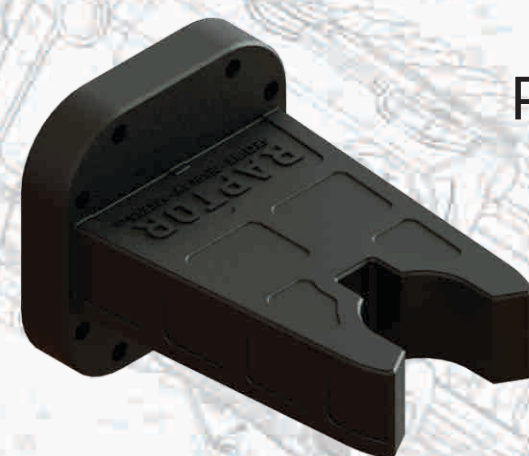
## 2 BRACKETS

### RAPTOR BARREL BRACKET



RPN1040

### RAPTOR BUFFER BRACKET



RPN1035

### RAPTOR STANDOFF



RPN1045

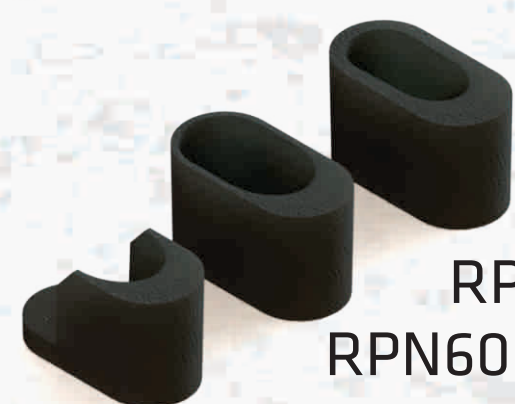
### MAGAZINE MOUNT - AR15



RPN1025

## 3 ACCESSORIES

### BARREL BRACKET INSERTS



RPN6006 0.7IN

RPN6003 0.9IN

RPN6004 1.0IN

### 2IN SUPPRESSOR INSERT



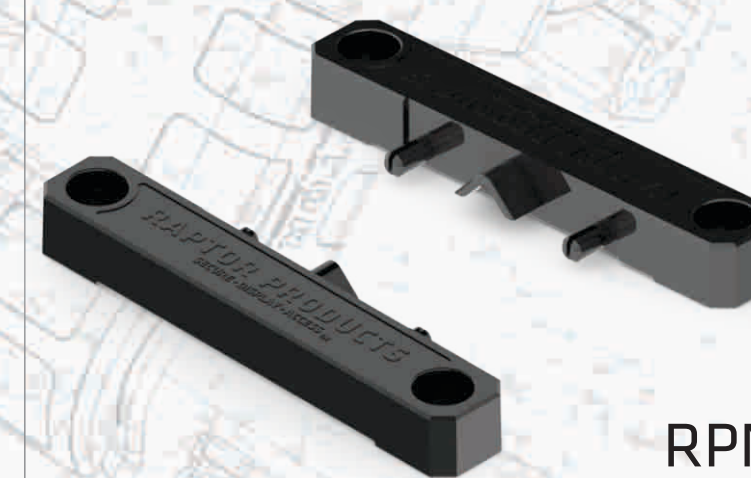
RPN1415

### RAPTOR SHOTGUN INSERT



RPN1410

### RAPTOR RAIL FEET



RPN1050

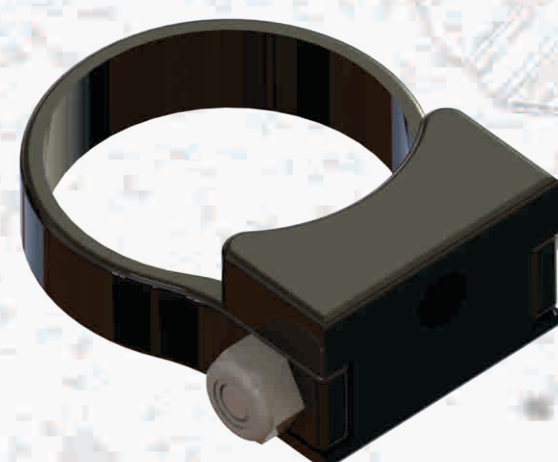
## 4 ACCESSORIES

### RAPTOR MAGAZINE HOLDER AR15



RPN1055

### ROLL BAR CLAMPS



RPN70XX

### MAGAZINE MOUNT - AR 9mm



RPN1565

### MAGAZINE SLEEVE - AR10



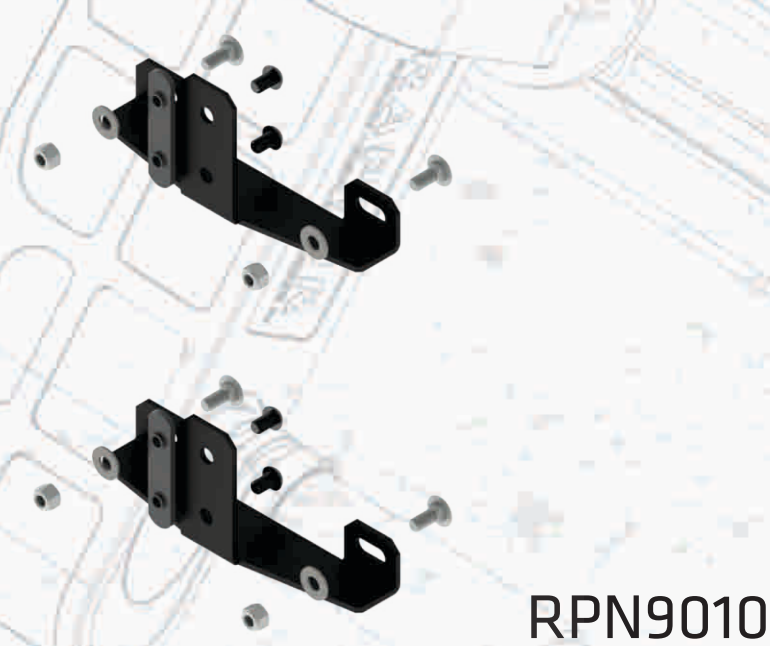
RPN1150



# RAPTOR PRODUCTS ACCESSORIES

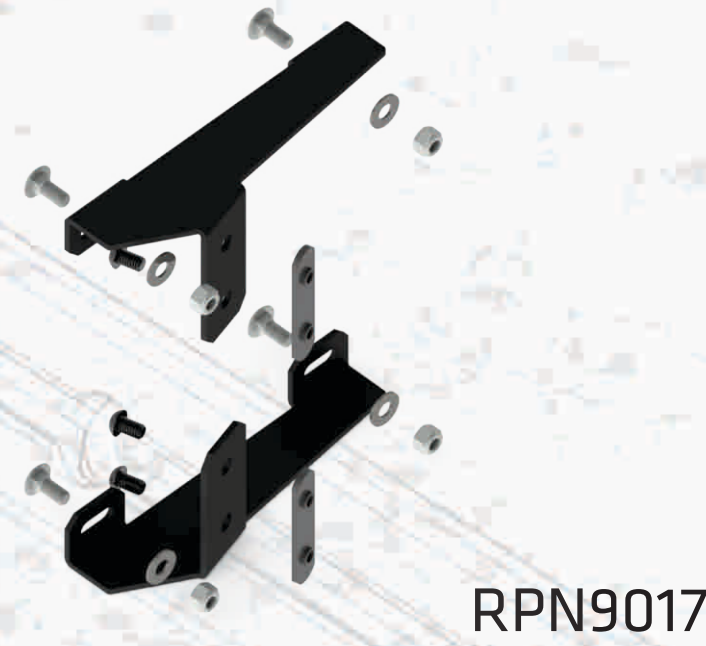
## 5 MOUNTING KITS

PARTITION KIT - CENTER



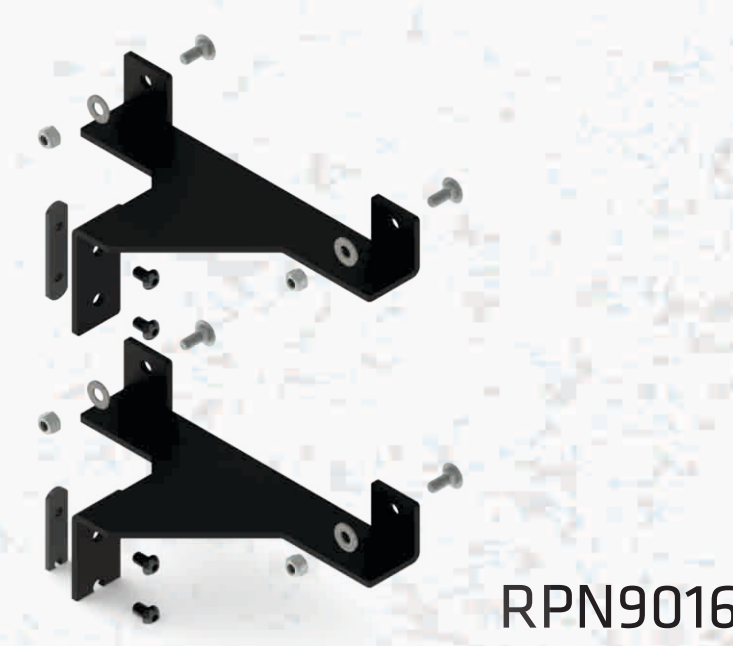
RPN9010

PARTITION KIT - OFFSET 15° ANGLE



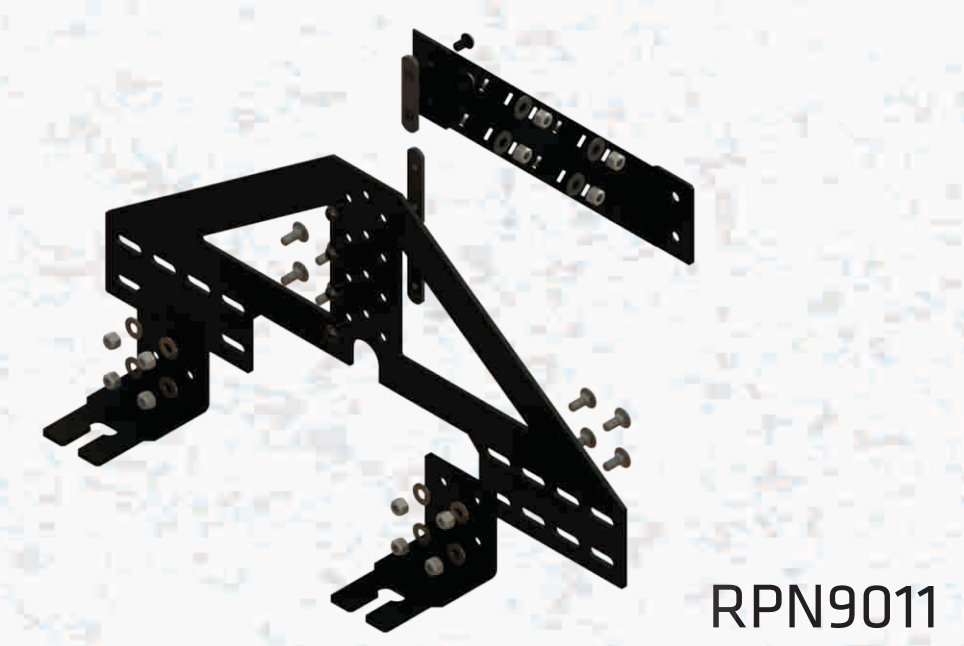
RPN9017

HALF PARTITION KIT



RPN9016

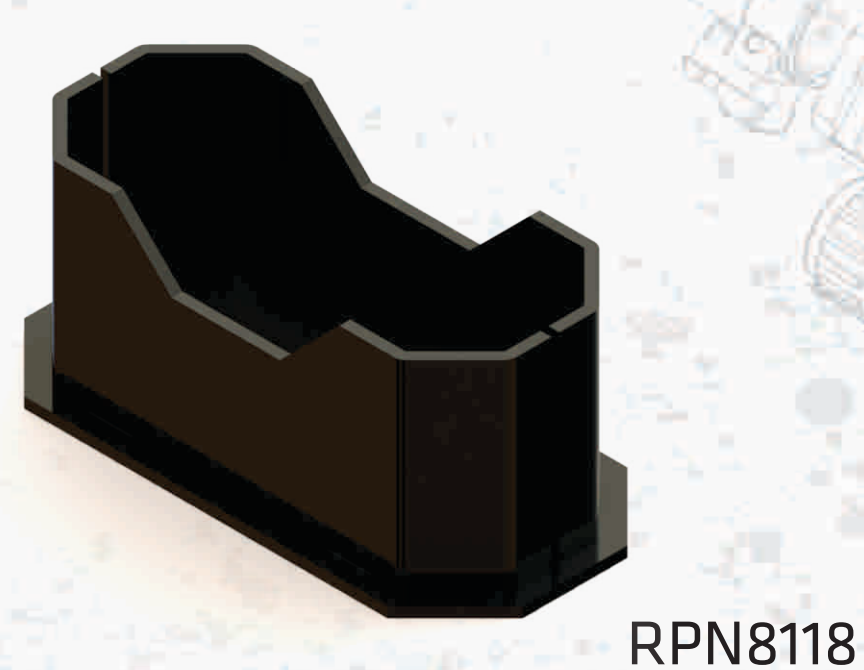
FREE STANDING BASE KIT



RPN9011

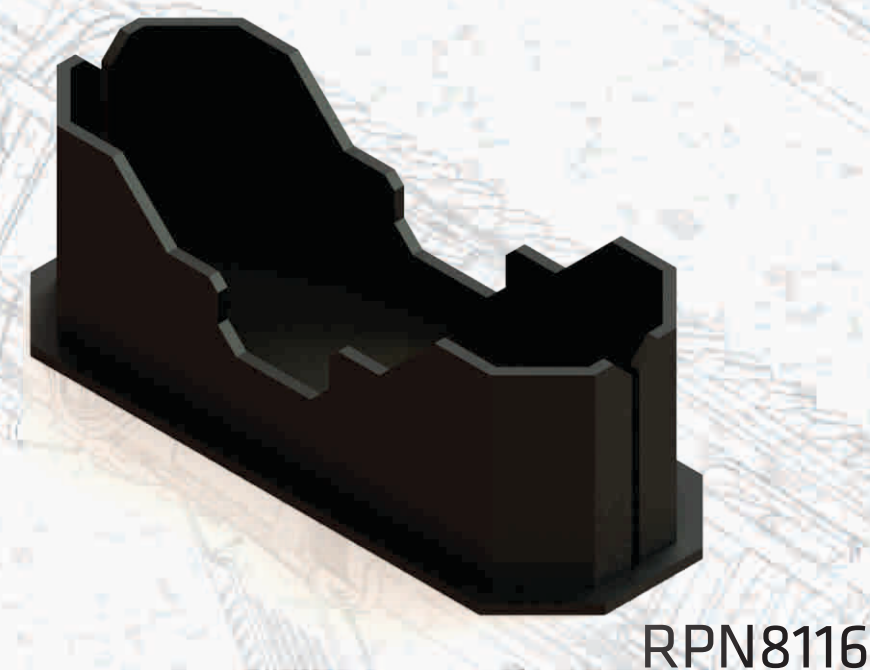
## 6 BRACKETS

STOCK BRACKET



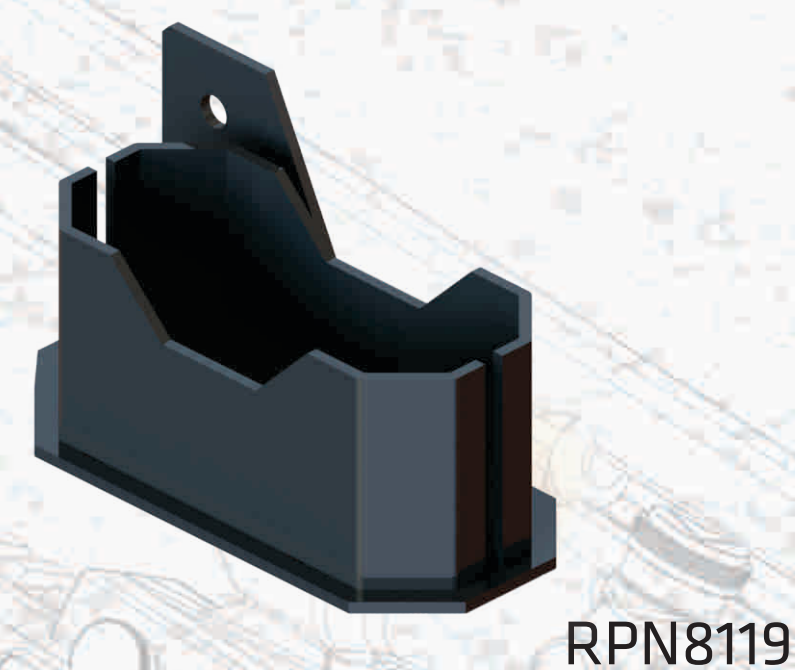
RPN8118

STOCK BRACKET - XL



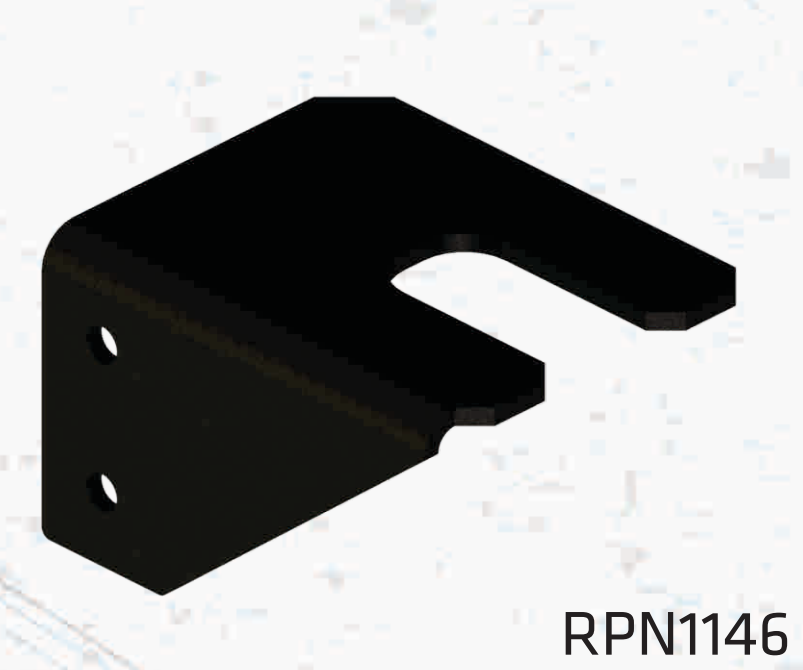
RPN8116

STOCK BRACKET - SIDE MOUNT



RPN8119

SHOTGUN SLIDE STOP



RPN1146

## 7 BRACKETS

MOUNTING BRACKET - 90 DEG



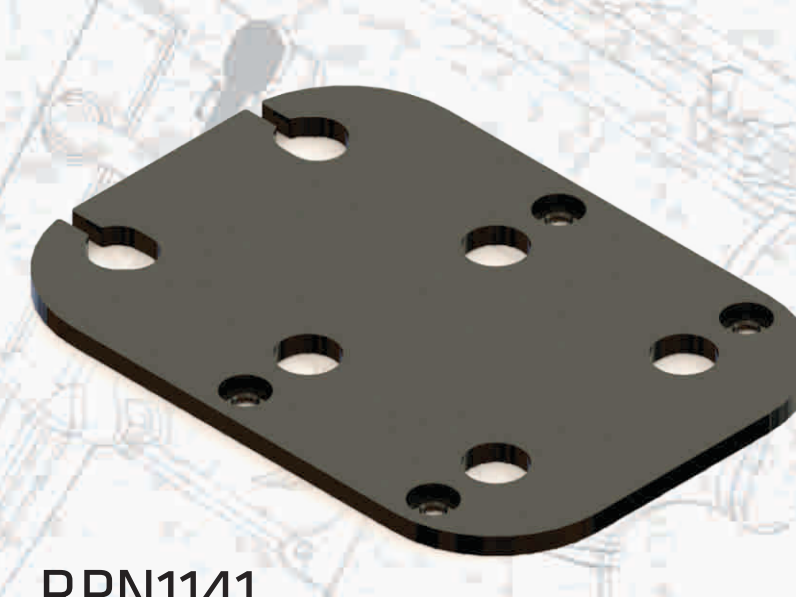
RPN1135

MOUNTING BRACKET - 45 DEG



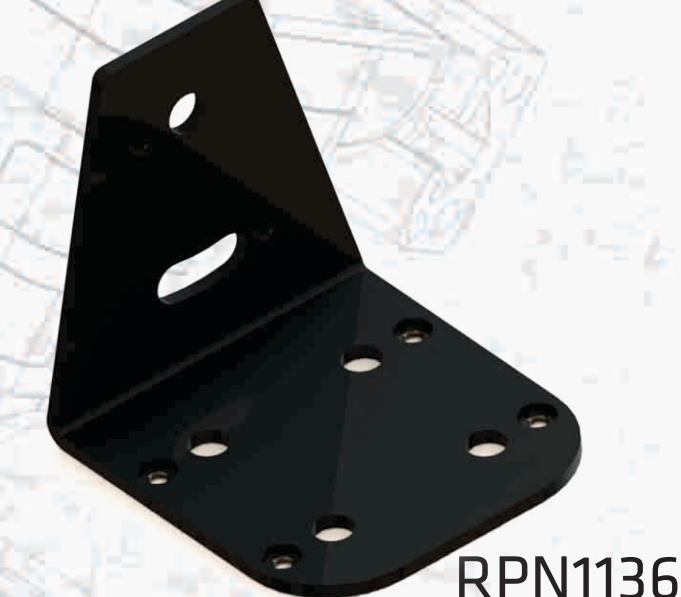
RPN1140

MOUNTING BRACKET - 0 DEG



RPN1141

MOUNTING BRACKET - SINGLE



RPN1136

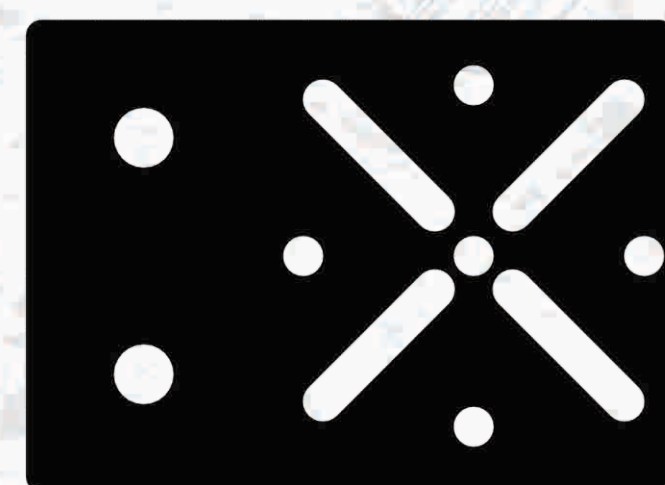
## 8 BRACKETS

MOUNTING BRACKET - 90 DEG  
10 DEG ANGLE



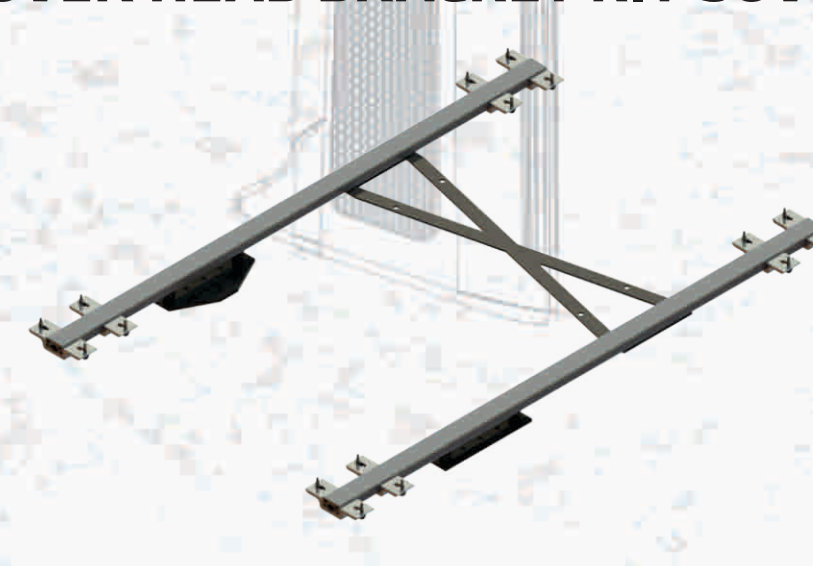
RPN1142

ACCESSARY MOUNTING PLATE



RPN1143

OVER HEAD BRACKET KIT-SUV



RPN9012

OVER HEAD BRACKET KIT-TRUCK



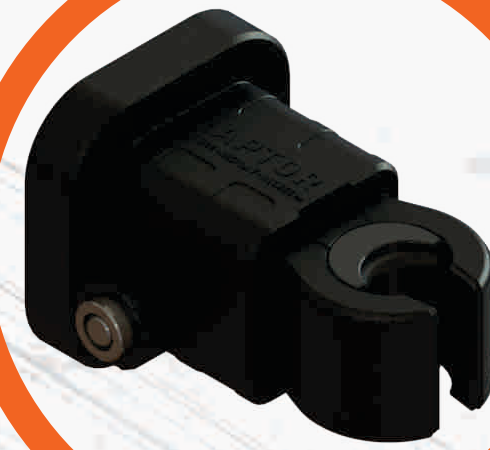
RPN9013



# RAPTOR DUAL WEAPON FREESTANDING SYSTEM™

## RAPTOR SHOTGUN MOUNT™

The Raptor Shotgun Mount™ “auto-locking” technology grasps your shotgun barrel for a secure mounting option.



## RAPTOR BARREL BRACKET™

The Raptor Barrel Bracket™ secures your rifle's barrel as part of your custom Raptor™ Products system configuration.



## RAPTOR BUFFER MOUNT™

The Raptor Buffer Mount™ “auto-locking” technology grasps your firearm's buffer tube to secure your rifle when you have limited rail space available on your weapon.



## RAPTOR FULL SHIELD™

The Raptor Full Shield™ 10 Ga powder coated steel protects your firearm from snagging gear on removal and prevents access to critical components such as the trigger, mag release, optics, charging handle, and safety selector.



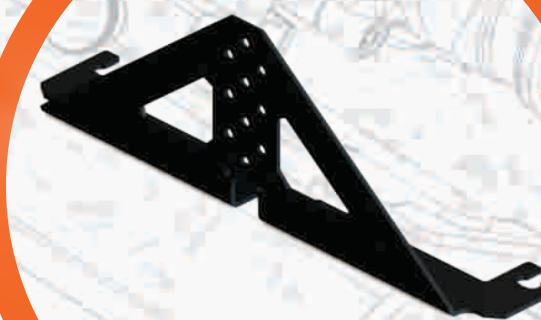
## HIDDEN WIRES

The Raptor Dual Weapon Systems™ utilize internally routed wiring protecting them from daily abuse and preventing access.



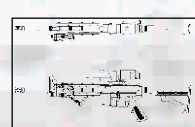
## RAPTOR BASE PLATE™

The Raptor Rear Seat Plate™ 3/16 powder coated steel provides a stable and robust platform to securely mount your Raptor Weapon Mounting System.



The Raptor Dual Weapon Freestanding System™ incorporates our patented technology for secure weapon retention, unparalleled rapid access and improved weapon positioning. Eliminating weapon rattling and providing industry leading barrel down storage you can rest assured that your weapon will be at the ready when you need it and secure when you step away.

RAPTOR FREESTANDING BRACKET KIT  
PART NUMBER: RPN9011



© 2018 Raptor Products, Inc. All copyrights, trademarks, and registered trademarks are property of their respective owners.



# RAPTOR DUAL WEAPON PARTITION SYSTEM™

## RAPTOR SHOTGUN MOUNT™

The Raptor Shotgun Mount™ “auto-locking” technology grasps your shotgun barrel for a secure mounting option.



## RAPTOR BARREL BRACKET™

The Raptor Barrel Bracket™ secures your rifle's barrel as part of your custom Raptor™ Products system configuration.



## RAPTOR BUFFER MOUNT™

The Raptor Buffer Mount™ “auto-locking” technology grasps your firearm's buffer tube to secure your rifle when you have limited rail space available on your weapon.



## RAPTOR FULL SHIELD™

The Raptor Full Shield™ 10 Ga powder coated steel protects your firearm from snagging gear on removal and prevents access to critical components such as the trigger, mag release, optics, charging handle, and safety selector.

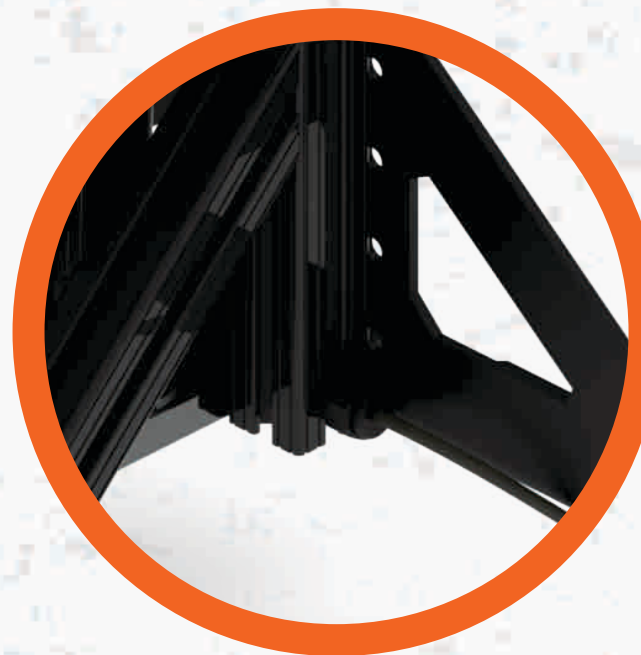


## RAPTOR PARTITION PLATE™

The Raptor Partition Mounting kit provides a stable, adjustable and robust platform to securely mount your Raptor Weapon Mounting System.

## HIDDEN WIRES

The Raptor Dual Weapon Systems™ utilize internally routed wiring protecting them from daily abuse and preventing access.



The Raptor Dual Weapon Partition System™ incorporates our patented technology for secure weapon retention, unparalleled rapid access and improved weapon positioning. Eliminating weapon rattling and providing industry leading barrel down storage you can rest assured that your weapon will be at the ready when you need it and secure when you step away.

RAPTOR PARTITION BRACKET KIT  
RPN9010 - CENTER  
RPN9016 - HALF PARTITION  
RPN9017 - OFFSET W/15 DEG ANGLE



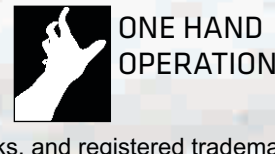
MADE IN THE USA



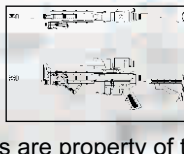
SECURE  
ACCESS



ADJUSTABLE  
10.3IN-22IN  
BARREL



ONE HAND  
OPERATION



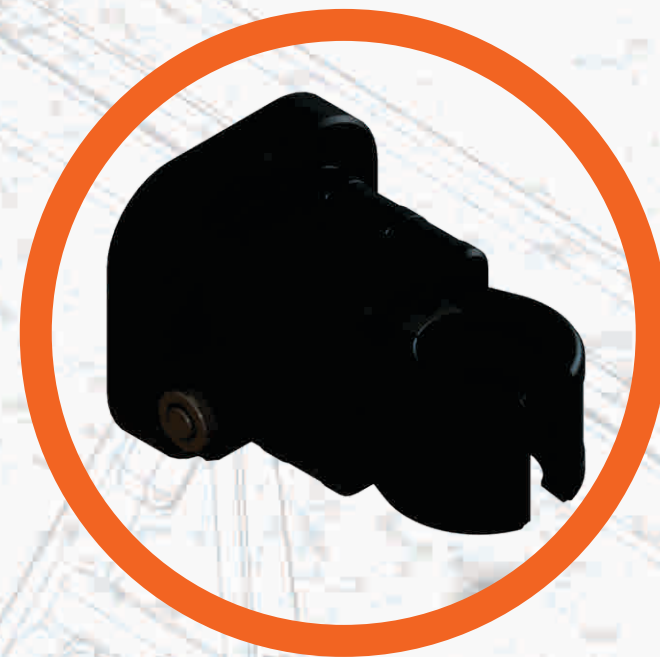
ACCOMMODATES  
OPTICS &  
ACCESSORIES

© 2018 Raptor Products, Inc. All copyrights, trademarks, and registered trademarks are property of their respective owners.



## RAPTOR BUFFER MOUNT™

The Raptor Buffer Mount™ “auto-locking” technology grasps your firearm’s buffer tube to secure your rifle when you have limited rail space available on your weapon.



## RAPTOR RAIL™

The Raptor Rail™ is a Sturdy foundation for your Raptor Products™ system configuration

32"



## RAPTOR SIDE SHIELD™

The Raptor Side Shield™ 10 Ga powder coated steel protects your firearm from snagging gear on removal and prevents access to critical components such as the trigger, mag release, optics, charging handle, and safety selector.

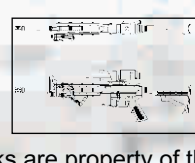
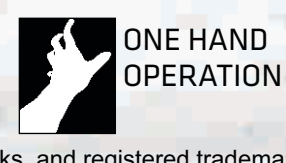


## RAPTOR BARREL BRACKET™

The Raptor Barrel Bracket™ secures your rifle’s barrel as part of your custom Raptor™ Products system configuration.



The Raptor Single Weapon Partition System™ incorporates our patented technology for secure weapon retention, unparalleled rapid access and improved weapon positioning. Eliminating weapon rattling and providing industry leading barrel down storage you can rest assured that your weapon will be at the ready when you need it and secure when you step away.

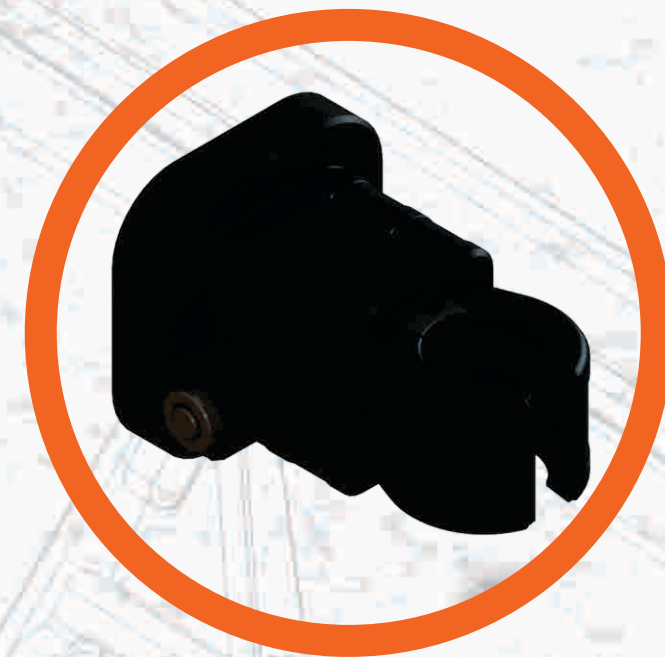




# 90 Deg RAPTOR SINGLE WEAPON SYSTEM™

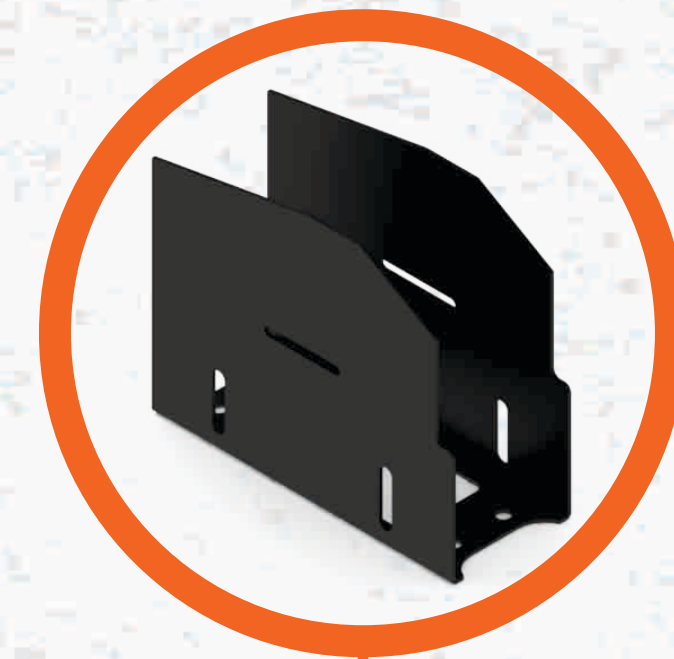
## RAPTOR BUFFER MOUNT™

The Raptor Buffer Mount™ “auto-locking” technology grasps your firearm’s buffer tube to secure your rifle when you have limited rail space available on your weapon.



## RAPTOR SIDE SHIELD™

The Raptor Full Side Shield™ 10 Ga powder coated steel protects your firearm from snagging gear on removal and prevents access to critical components such as the trigger, mag release, optics, charging handle, and safety selector.



## RAPTOR BARREL BRACKET™

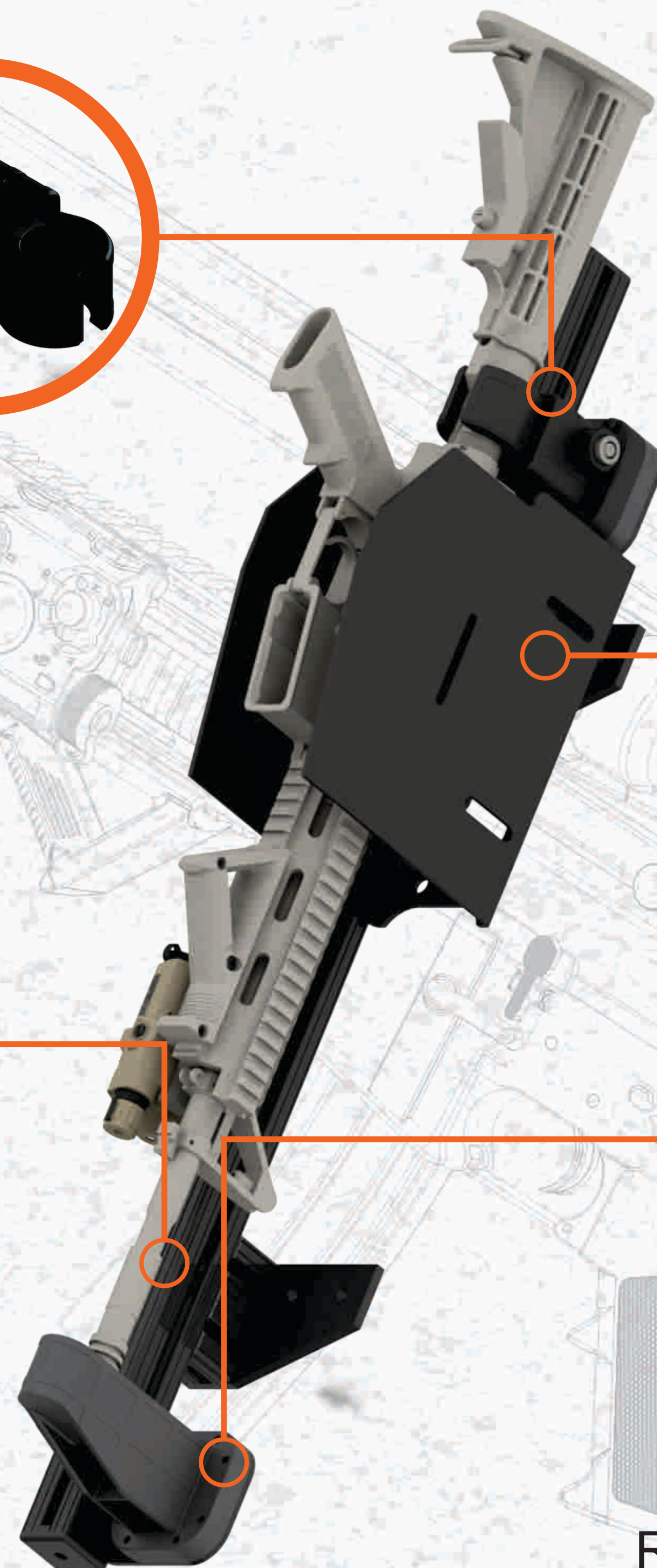
The Raptor Barrel Bracket™ secures your rifle’s barrel as part of your custom Raptor™ Products system configuration.



## RAPTOR QUAD RAIL™

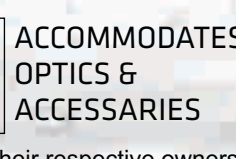
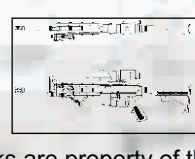
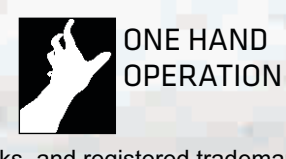
The Raptor Rail™ is a Sturdy foundation for your Raptor Products™ system configuration

36"



RAPTOR PARTITION BRACKET KIT  
RPN9010 - CENTER  
RPN9016 - HALF PARTITION  
RPN9017 - OFFSET W/15 DEG ANGLE

The 90 Deg Raptor Single Weapon Partition System™ incorporates our patented technology for secure weapon retention, unparalleled rapid access and improved weapon positioning. Eliminating weapon rattling and providing industry leading barrel down storage you can rest assured that your weapon will be at the ready when you need it and secure when you step away.





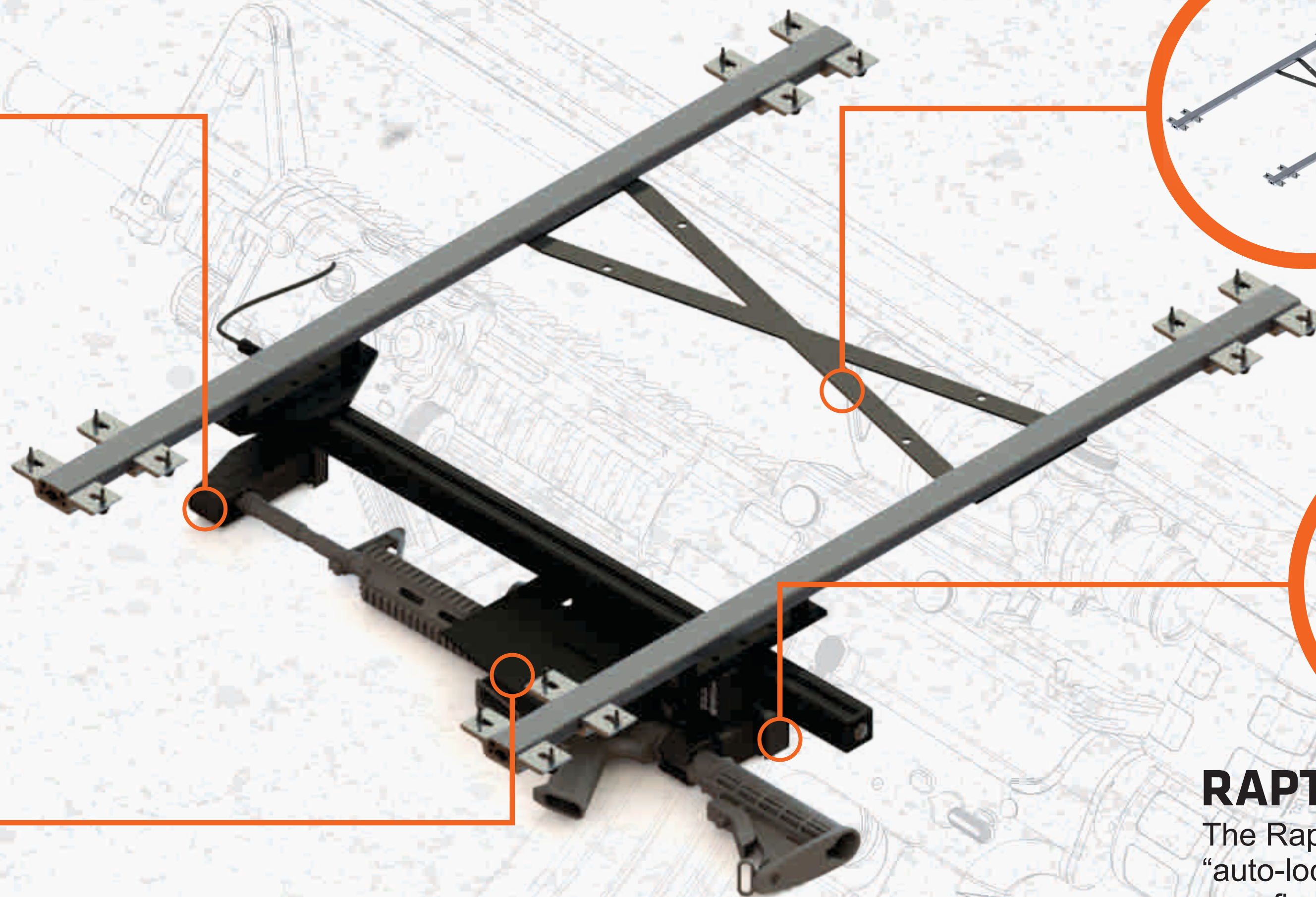
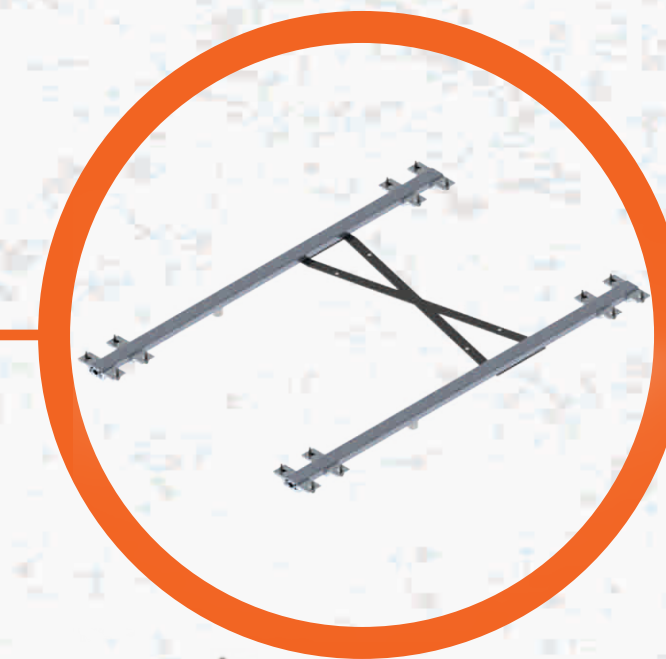
## RAPTOR BARREL BRACKET™

The Raptor Barrel Bracket™ secures your rifle's barrel as part of your custom Raptor™ Products system configuration.



## RAPTOR OVERHEAD BRACKET™

The Raptor Overhead Bracket™ secures your vehicle roof structure for a solid foundation and secure weapon retention. The bracketry is hidden inside the vehicle head liner for a clean installation.



## RAPTOR BUFFER MOUNT™

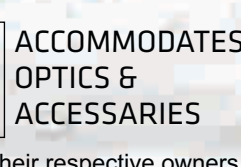
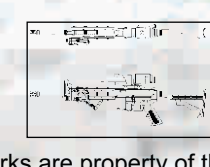
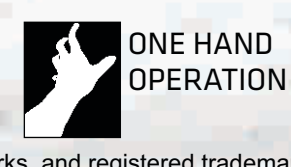
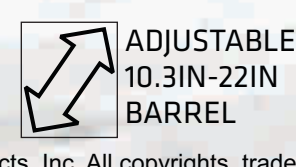
The Raptor Buffer Mount™ "auto-locking" technology secures onto your firearm's buffer tube, providing security and fast access to your weapon.



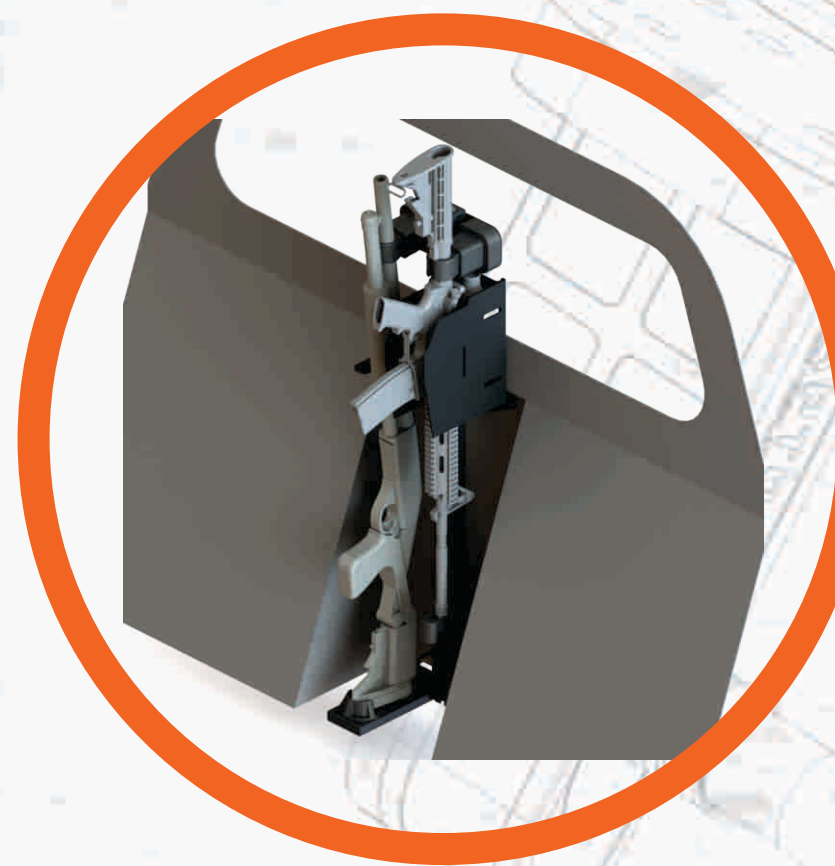
## RAPTOR SIDE SHIELD™

The Raptor Full Side Shield™ 10 Ga powder coated steel protects your firearm from snagging gear on removal and prevents access to critical components such as the trigger, mag release, optics, charging handle, and safety selector.

RAPTOR OVER HEAD BRACKET KIT  
RPN9012 - SUV  
RPN9013 - TRUCK







**DUAL-WEAPON  
PARTITION MOUNT**



**MULTI-WEAPON  
CUSTOMIZED CASES**



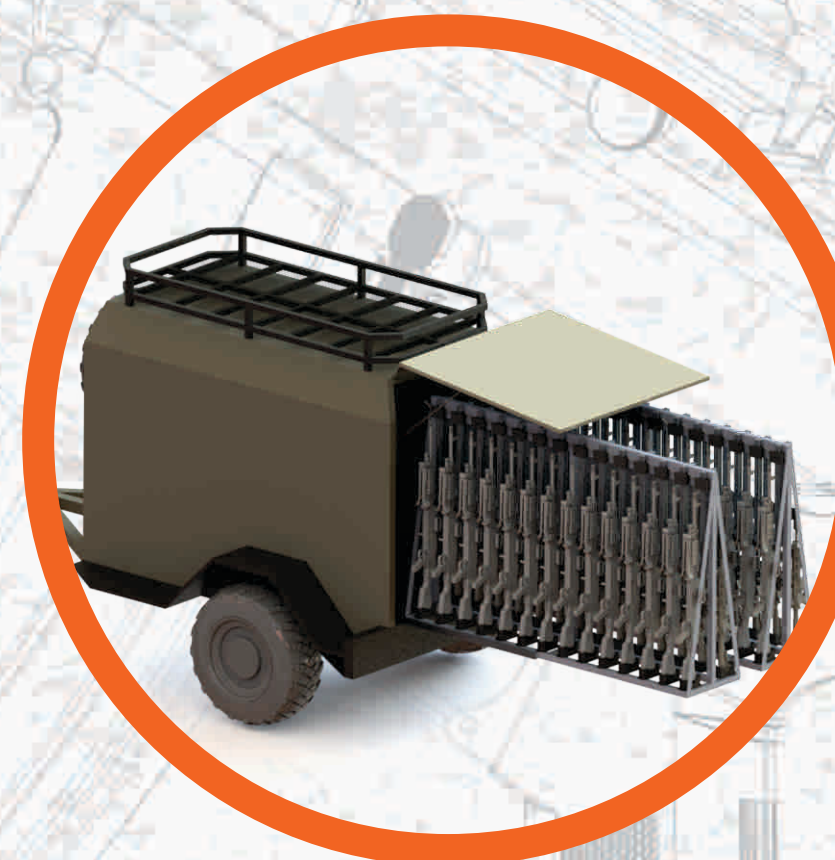
**SINGLE-WEAPON  
PARTITION MOUNT**



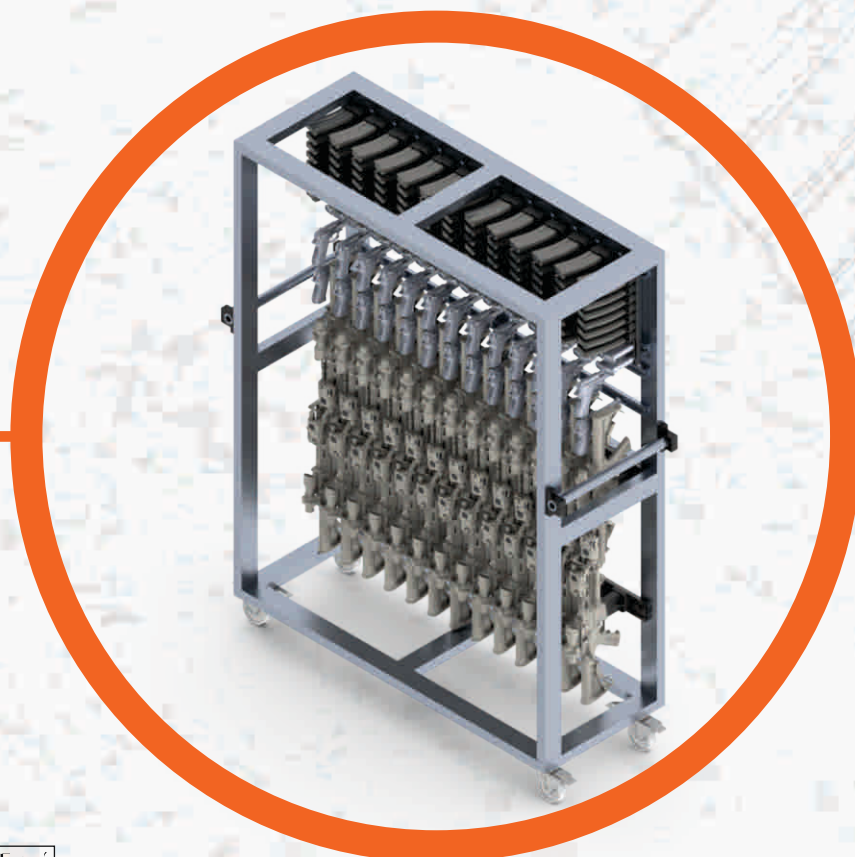
**MULTI-WEAPON  
RANGE RACKS**



**SWAT VEHICLES**



**MOBILE ARMORY  
CUSTOM TRAILERS**



**CUSTOMIZED  
WEAPON CARTS**



**STAGING RACKS**